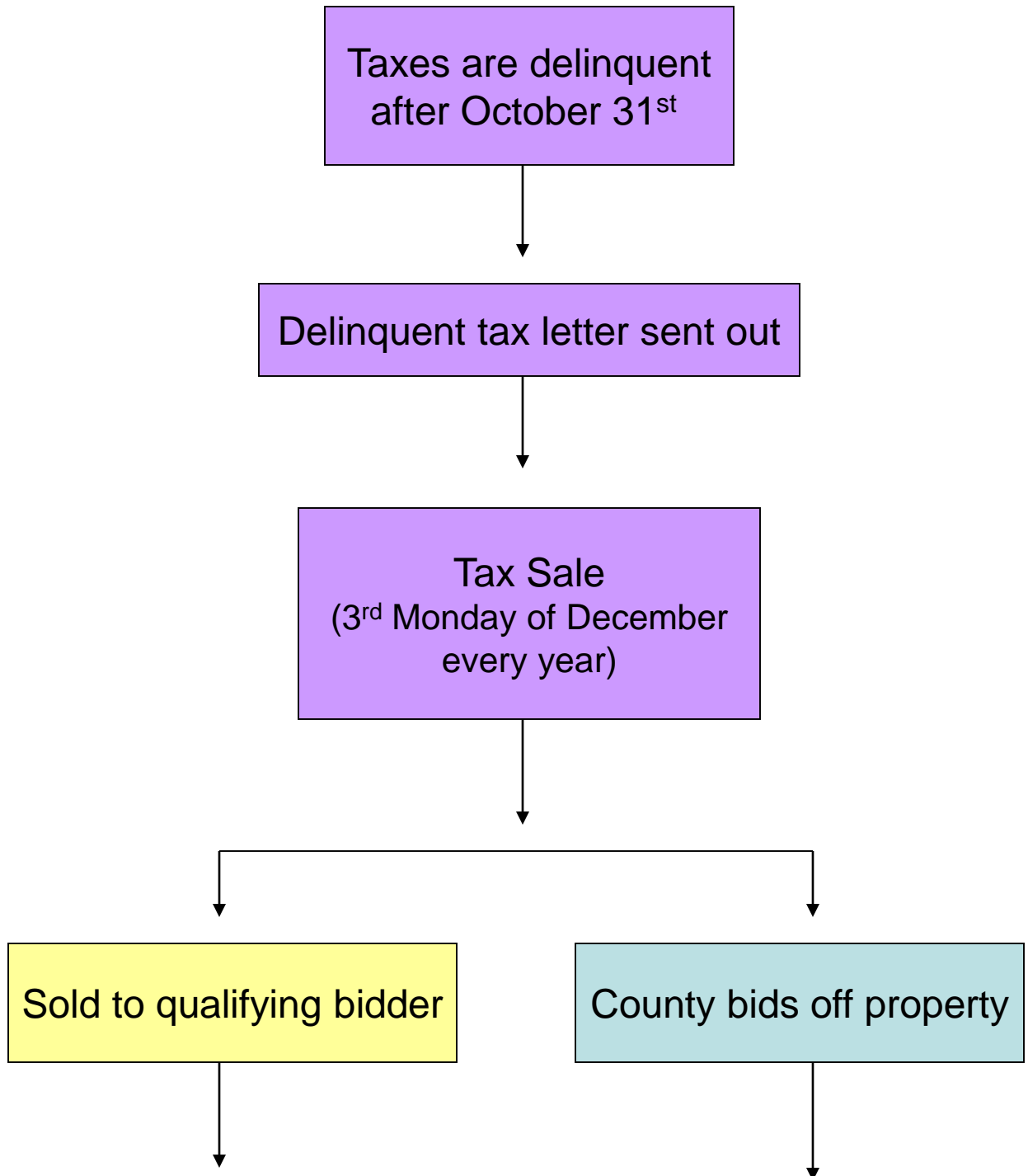
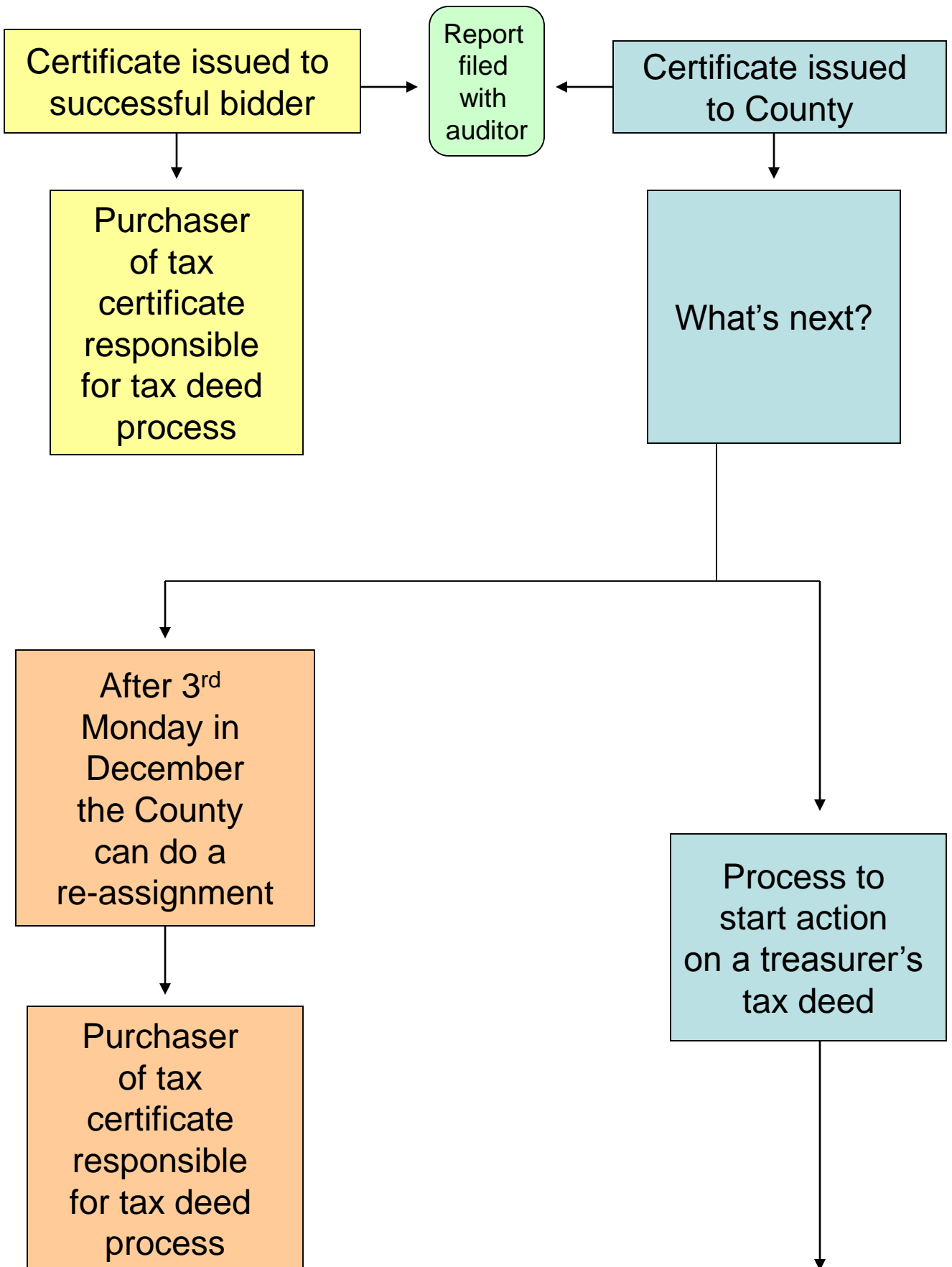
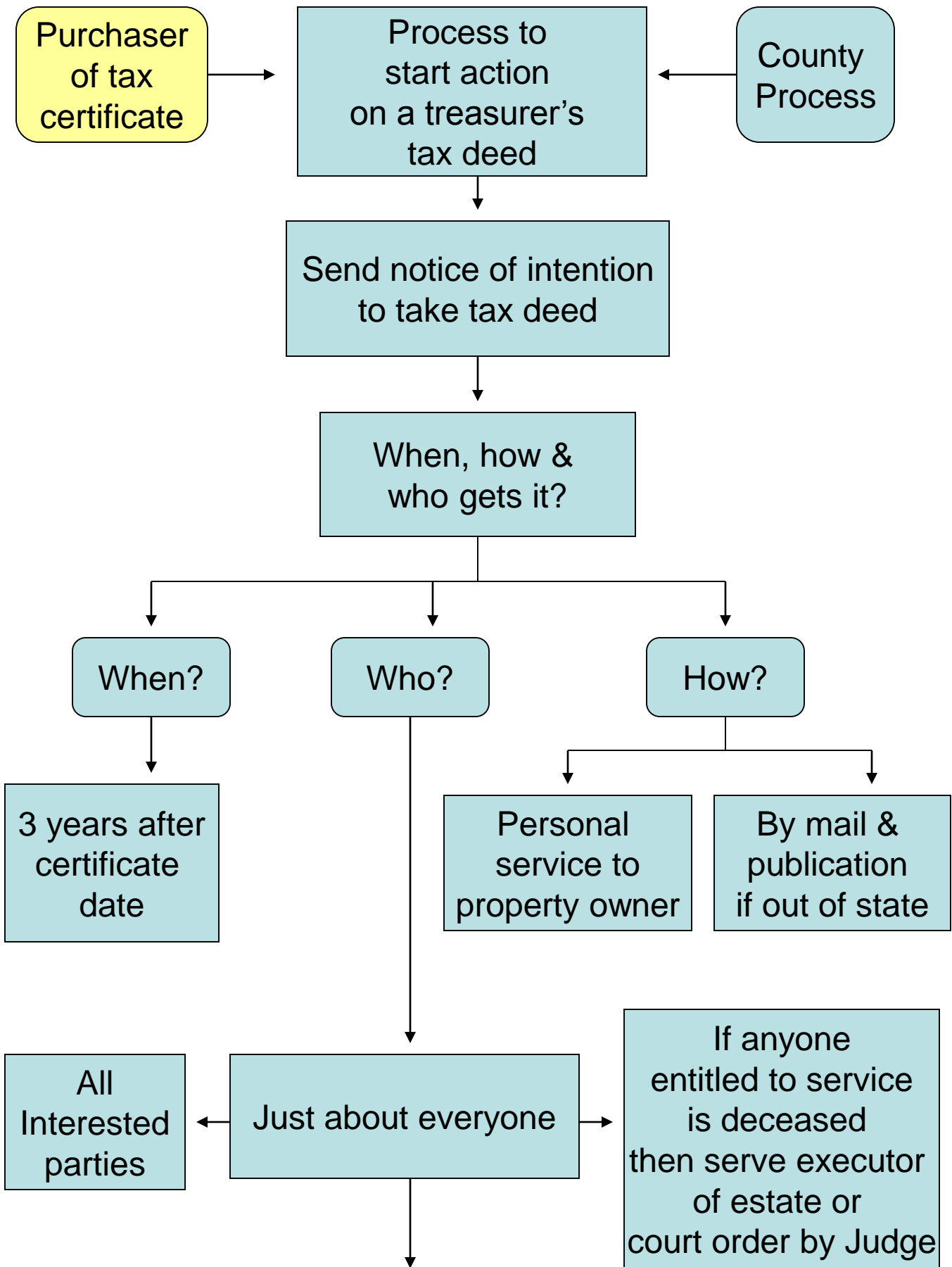


Tax Deed Flow Chart

2016 Taxes Payable in 2017







60 days start
when affidavit
of completed
service is
filed with
treasurers office

```
graph TD; A[60 days start when affidavit of completed service is filed with treasurers office] --> B[What is redemption?]; A --> C[No redemption]; B --> D[Owner or interested party pays all back taxes and interest (10%) and up to $400 in costs]; C --> E[60 Days issue tax deed];
```

What is redemption?

No redemption

Owner or
interested party
pays all back
taxes and interest
(10%) and up to
\$400 in costs

60 Days
issue
tax deed

Questions?