

Statistical Comparison

The Eighty-Eighth Legislature

Spring 2013

Prepared By
South Dakota Legislative Research Council

FOREWORD

Each year the Legislative Research Council receives information requests for miscellaneous facts and figures regarding the Legislature and its committees. This document compiles some of those miscellaneous facts and figures for the Eighty-eighth Legislature and compares them with previous Legislatures.

If anyone has any suggestions on additional information that might be included in this document, please forward your comments to the Legislative Research Council.

David Ortbahn and Marjorie Pirnat of the Legislative Research Council staff compiled and organized the data for this document.

TABLE OF CONTENTS

Page

2012 ELECTION RESULTS

THE 2012 ELECTION RESULTS	1
Graph 1 Political Control of Senate, 1963-2013	3
Graph 2 Political Control of House, 1963-2013	3
Graph 3 Margins of Victory, Legislative Campaigns	4
Graph 4 Margins of Victory, Campaigns for Senate	4
Graph 5 Margins of Victory, Campaigns for House	5
Table A Legislative Turnover, 2002-2012	6
Table B Number of Terms Served by Incumbent Legislators Not Returning to Legislature, 2003-2013	7
Table C Political Control of South Dakota Governorship and Legislature, 1901-2013	8

THE EIGHTY-EIGHTH LEGISLATURE

THE EIGHTY-EIGHTH LEGISLATURE	9
AGE	9
Graph 6 Age of Legislators	9
Graph 7 Age of Senators	10
Graph 8 Age of Representatives	10
GENDER	11
Graph 9 Senators' Gender	11
Graph 10 Representatives' Gender	11
Table D Number of Women Legislators 1923-2013	12
EDUCATION	13
Graph 11 Education of Legislators 2013-2014	13
Graph 12 Education of Legislators	13
Graph 13 Education of Senators	14
Graph 14 Education of Representatives	14
OCCUPATION	15
Graph 15 Occupational Makeup of Senate	15
Graph 16 Occupational Makeup of House	16
TENURE	16
Graph 17 Legislator Tenure, All Legislators	17
Table E Prior Legislative Service of Senate Members	18
Graph 18 Legislator Tenure, in Senate	18
Table F Prior Legislative Service of House Members	19
Graph 19 Legislator Tenure, in House of Representatives	19

PUBLIC SERVICE	20
-----------------------------	-----------

Graph 20	Other Public Offices Held, All Legislators	20
----------	--------------------------------------------------	----

LEGISLATIVE LEADERSHIP	21
-------------------------------------	-----------

LEGISLATIVE COMMITTEES

THE LEGISLATIVE COMMITTEES	23
-----------------------------------------	-----------

Table G	Total Number of Bills and Resolutions Referred to Committees for Years 2004-2013	24
Graph 21	2013 Distribution of Bills to Senate Committees	26
Graph 22	2013 Senate Committee Workload	26
Graph 23	2013 Distribution of Bills to House Committees	27
Graph 24	2013 House Committee Workload	27
Table H	Number of Standing Legislative Committees each Session for Years 1891-2013	28
Graph 25	Senate Committees - Number each Legislative Session	29
Graph 26	House Committees - Number each Legislative Session	29

DISPOSITION OF BILLS AND RESOLUTIONS

2013 DISPOSITION OF BILLS AND RESOLUTIONS	31
--------------------------------------------------------	-----------

Table I	Disposition of Senate Bills, 2013	33
Graph 27	Disposition of Senate Bills, 2013	33
Table J	Disposition of House Bills, 2013	34
Graph 28	Disposition of House Bills, 2013	34
Graph 29	Disposition of Senate Bills, 2004-2013	35
Graph 30	Disposition of House Bills, 2004-2013	35
Table K	Disposition of Senate Bills for Years 1890-2013	36
Table L	Disposition of House Bills for Years 1890-2013	38
Graph 31	Disposition of Legislative Bills, 2004-2013	40
Graph 32	Vetoes - 1984-2013	40
Graph 33	Senate Joint Resolutions Introduced, 1984-2013	41
Graph 34	House Joint Resolutions Introduced, 1984-2013	41
Table M	Disposition of all Legislative Bills for Years 1890-2013	42
Table N	Bills Vetoed by the Governor for Years 1890-2013	44
Table O	Disposition of Joint Resolutions for Years 1909-2013	46
Graph 35	Senate Concurrent Resolutions Introduced, 1984-2013	48
Graph 36	House Concurrent Resolutions Introduced, 1984-2013	48
Graph 37	Senate Commemorations Adopted, 1989-2013	49
Graph 38	House Commemorations Adopted, 1989-2013	49
Table P	Disposition of Concurrent Resolutions for Years 1921-2013	50
Table Q	Disposition of Commemorations for Years 1989-2013	51

SPECIAL SESSIONS

SPECIAL SESSIONS	53
-------------------------------	-----------

Table R	Disposition of Total Bills for all Special Sessions	53
Table S	Disposition of Senate Bills for all Special Sessions	54
Table T	Disposition of House Bills for all Special Sessions	55
Table U	Disposition of Resolutions and Commemorations for all Special Sessions	56

GENERAL APPROPRIATIONS ACT

Graph	39	General Appropriations Act - Funds Appropriated (FY 1995 - FY 2014)	57
Graph	40	General Appropriations Act - Funds Appropriated (FY 2005 - FY 2014)	57
Table	V	General Appropriations Act - General Funds Appropriated (FY 1891 - FY 1967).....	58
Table	W	General Appropriations Act - Funds Appropriated (FY 1968 - FY 2014).....	59

2012 ELECTION RESULTS

2012 ELECTION RESULTS

There were 20 general election contests for House seats and 23 general election contests for the Senate in 2012. There were also 18 primary election contests for the House and 12 primary election contests for the Senate. This compares to 30 House general election contests and 24 Senate general election contests and nine House primary election contests and five Senate primary election contests in 2010. Nineteen legislative districts had full Democratic and Republican slates for the House in the 2012 general election, nine more than in 2010. Of the 19 unfilled slates for the House, six were missing two Democratic candidates, two were missing two Republican candidates, seven were missing one Democratic candidate and four were missing one Republican candidate. There were 12 Senate races unopposed -- two Democrats were unopposed and ten Republicans were unopposed.

In the 2012 general election, the voters of the state elected 28 Republicans and seven Democrats to the Senate and 53 Republicans and 17 Democrats, to the House of Representatives. In comparison to the 2011 Legislature, the election resulted in a loss of two seats by the Republicans in the Senate and a gain of three seats by the Republicans in the House of Representatives. Table C reviews the political control of the governorship and the Legislature since 1901. Graphs 1 and 2 show the political control of the Senate and the House of Representatives since 1963.

Eighteen of the representatives were elected by five percent or less of the general election vote. Only three senators had a narrow victory margin of less than five percent. Fourteen senators were unopposed or had victory margins of more than 26 percent. Twenty representatives were unopposed or had victory margins of more than 26 percent. The margins of victory for 2012 are compared with previous elections in Graphs 3 to 5, inclusive.

The election in 2012 resulted in a total of nine legislators being defeated for reelection -- six representatives and three senators. Among those defeated, Senator Art Fryslie had 12

years of legislative service and Senator Kent Juhnke had 12 years of legislative service. The average legislative tenure of senators defeated in a reelection bid was 9.3 years. The average legislative tenure of representatives defeated in a reelection bid was 3.2 years.

There were nine senators and 25 representatives who did not run for their previous positions. Three of these senators were term limited and seven representatives could not run for the House of Representatives because of term limits. Of this group, one senator ran for the House of Representatives but was defeated. Twelve representatives ran for the Senate and five were elected. The tenure of the senators not running for reelection was 10.1 years. The average tenure of the representatives not running for reelection was 7.7 years.

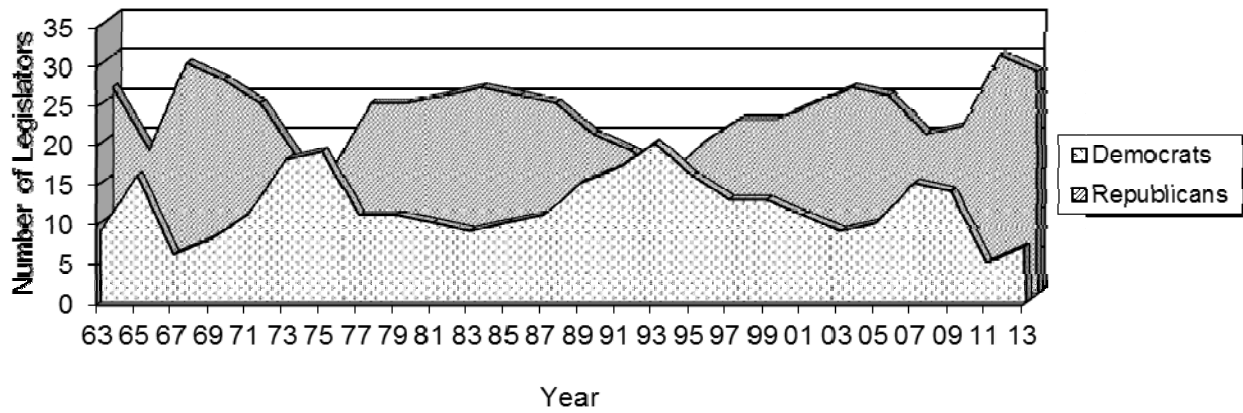
The result was a net loss of 40 legislators from the 2012 session for a legislative turnover rate of 38 percent. This data is compared with similar data from previous election years in Table A. Table B compares 2012 with other post-election years as to the amount of legislative experience lost from the previous legislative term.

Those with at least four terms of legislative service not seeking reelection to the Senate were: Senator Bob Gray, 8 years; Senator Joni Cutler, 10 years; Senator Tom Hansen, 10 years; Senator Jeff Haverly, 10 years; Senator Jim Hundstad, 12 years; and Senator J.E. "Jim" Putnam, 25 years. Senators Gray, Hansen, and Hundstad could not be reelected to the Senate because of term limits.

Those with at least four terms of legislative service not seeking reelection to the House of Representatives were: Representative Jamie Boomgarden, 8 years; Representative Thomas Brunner, 8 years; Representative Val Rausch, 8 years; Representative Steve Street, 8 years; Representative Charles Turbiville, 8 years; Representative David Sigdestad, 10 years; Representative Edward Van Gerpen, 10 years; Representative Gene Abdallah, 12 years; Representatives Roger Hunt, 18 years; and Representative H. Paul Dennert, 20 years. Representatives Boomgarden, Brunner, Dennert, Hunt, Rausch, Street, and Turbiville could not be reelected to the House of Representatives because of term limits.

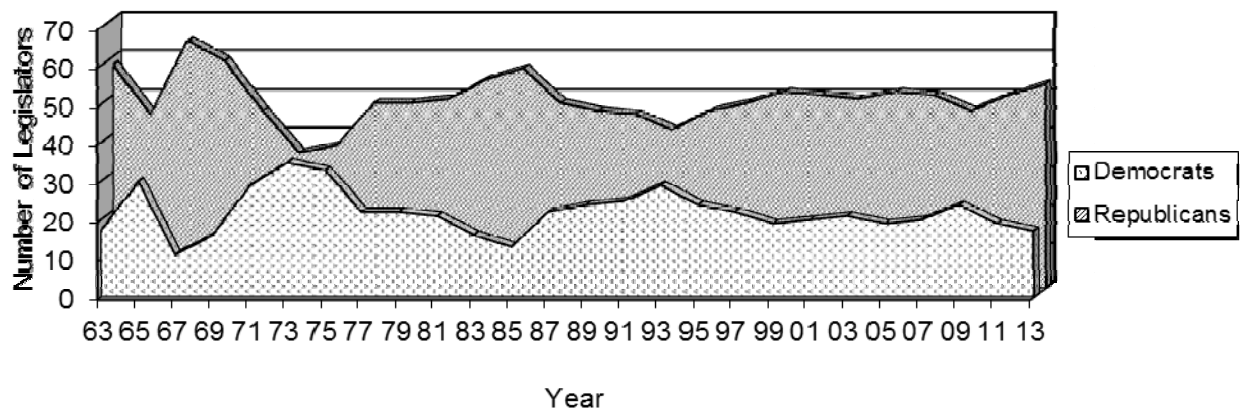
GRAPH 1

POLITICAL CONTROL OF SENATE
1963-2013



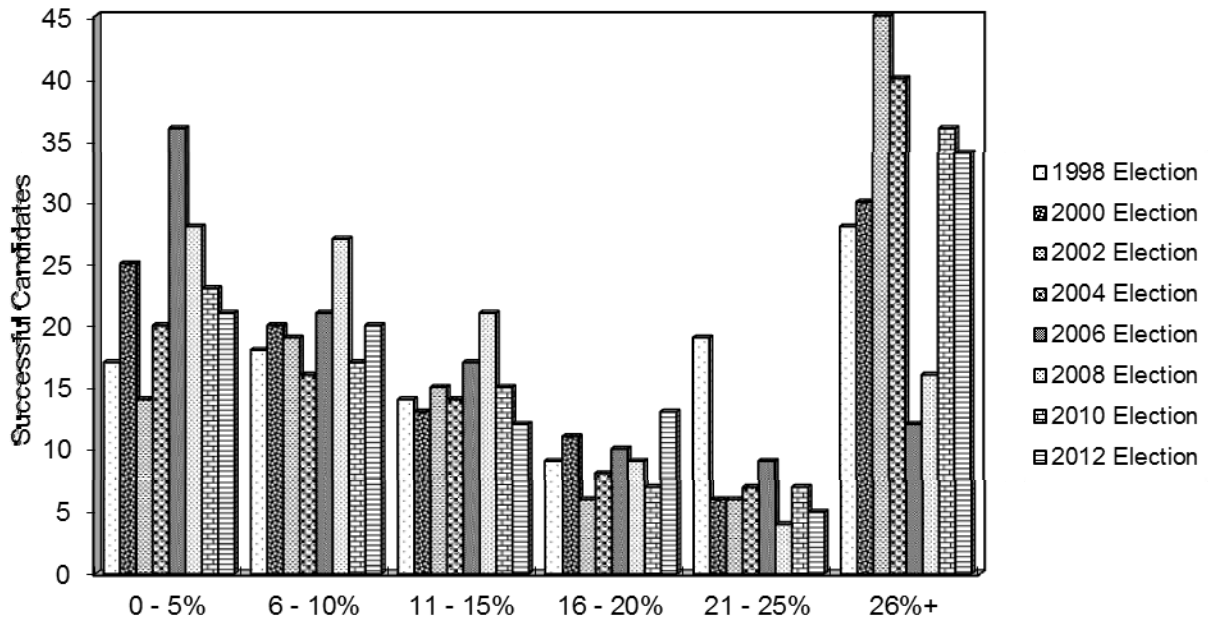
GRAPH 2

POLITICAL CONTROL OF HOUSE
1963-2013



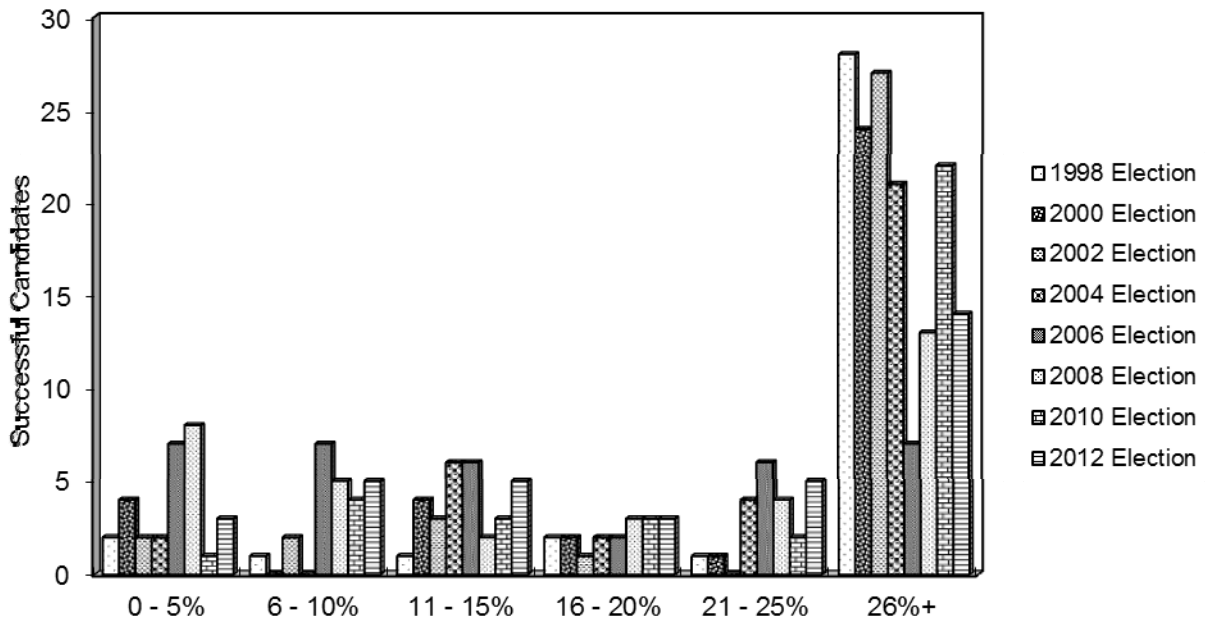
GRAPH 3

**MARGINS OF VICTORY
LEGISLATIVE CAMPAIGNS**



GRAPH 4

**MARGINS OF VICTORY
CAMPAIGNS FOR SENATE**



GRAPH 5

**MARGINS OF VICTORY
CAMPAIGNS FOR HOUSE**

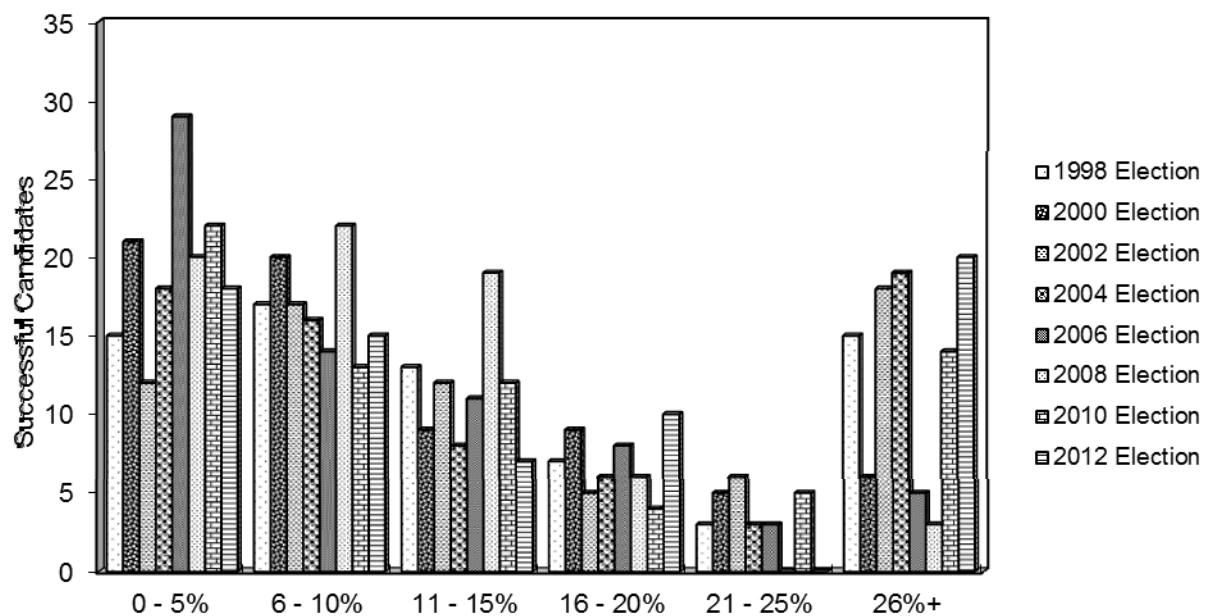


TABLE A
LEGISLATIVE TURNOVER

	2002	2004	2006	2008	2010	2012
<u>Senate</u>						
Number of senators not running for reelection	13	12	5	11	13	9
Average tenure in years of senators not running for reelection	9.6	11	11.6	11.5	9.7	10.1
Number of senators defeated in reelection bid	2	2	6	5	5	3
Average tenure in years of senators defeated in reelection bid	6	4	7.6	6	4.4	9.3
Total number of senators not returning	15	14	11	16	18	12
Average tenure of senators not returning	10	10	9.5	9.8	8.2	9.9
<u>House</u>						
Number of representatives not running for reelection to the House	20	19	15	32	22	25
Average tenure in years of representatives not running for reelection to the House	6.6	5.6	7.6	6.9	6.4	7.7
Number of representatives defeated in reelection bid	5	4	6	2	5	6
Average tenure in years of representatives defeated in reelection bid	3.2	2.3	5	11	6.8	3.2
Total number of representatives not returning to the House	25	23	21	34	27	31
Average tenure in years of representatives not returning to the House	5.9	5.0	6.9	7.1	6.5	6.8
<u>Total Legislature</u>						
Number of representatives elected to Senate	9	8	2	10	10	5
Number of senators elected to House	1	1	1	1	2	0
Total number of legislators not returning	30	28	29	39	33	38
Percent of legislator turnover	29%	27%	28%	37%	31%	36%

TABLE B

NUMBER OF TERMS SERVED BY INCUMBENT LEGISLATORS NOT RETURNING TO LEGISLATURE

Senate

No. of Terms	2003	2005	2007	2009	2011	2013
1	1	1	0	3	1	0
2	1	0	1	1	4	2
3	2	2	3	0	2	2
4	5	5	1	2	3	1
5	3	1	3	3	5	3
6	0	2	1	3	2	3
7	0	1	0	1	0	0
8	2	1	2	2	0	0
9	0	0	0	1	0	0
10	0	0	0	0	1	0
11	0	1	0	0	0	0
12	1	0	0	0	0	0
13	0	0	0	0	0	1
14	0	0	0	0	0	0
15	<u>0</u>	<u>0</u>	<u>0</u>	<u>0</u>	<u>0</u>	<u>0</u>
	15	14	11	16	18	12

House

No. of Terms	2003	2005	2007	2009	2011	2013
1	6	4	3	4	8	9
2	4	10	5	7	2	7
3	6	4	3	9	6	3
4	6	3	7	10	8	5
5	1	1	0	1	1	2
6	1	1	1	0	0	1
7	1	0	0	0	0	0
8	0	0	2	1	0	1
9	0	0	0	1	1	1
10	0	0	0	0	0	1
11	0	0	0	0	0	1
12	0	0	0	0	1	0
13	0	0	0	0	0	0
14	0	0	0	0	0	0
15	<u>0</u>	<u>0</u>	<u>0</u>	<u>1</u>	<u>0</u>	<u>0</u>
	25	23	21	34	27	31

TABLE C

POLITICAL CONTROL OF S.D. GOVERNORSHIP & LEGISLATURE (1901-2013)

GOVERNOR			SENATE			HOUSE		
YEAR	REP.	DEM.	REP.	DEM.	Others	REP.	DEM.	Others
1901	x		39	1	5	79	5	3
1903	x		41	3	1	76	6	5
1905	x		41	2	2	87	2	
1907	x		38	7		80	9	
1909	x		39	6		95	9	
1911	x		33	11	1	99	4	1
1913	x		33	11	1	88	14	1
1915	x		35	10		85	18	
1917	x		35	10		91	12	
1919	x		43	2		90	10	3
1921	x		44	1		94	4	5
1923	x		34	9	2	84	10	9
1925	x		34	10	1	85	11	7
1927		x	29	16		81	21	1
1929		x	33	12		83	20	
1931	x		31	14		79	24	
1933		x	16	29		33	70	
1935		x	14	31		40	63	
1937	x		22	23		66	37	
1939	x		30	5		62	13	
1941	x		31	4		65	10	
1943	x		31	4		69	6	
1945	x		35	0		72	3	
1947	x		35	0		71	4	
1949	x		27	8		64	11	
1951	x		29	6		66	9	
1953	x		35	0		73	2	
1955	x		29	6		57	18	
1957	x		18	17		48	27	
1959		x	15	20		43	32	
1961	x		23	12		57	18	
1963	x		26	9		58	17	
1965	x		18	16	1	45	30	
1967	x		29	6		64	11	
1969	x		27	8		59	16	
1971		x	24	11		46	29	
1973		x	17	18		35	35	
1975		x	16	19		37	33	
1977		x	24	11		48	22	
1979	x		24	11		48	22	
1981	x		25	10		49	21	
1983	x		26	9		54	16	
1985	x		25	10		57	13	
1987	x		24	11		48	22	
1988	x		25	10		48	22	
1989	x		20	15		46	24	
1991	x		18	17		45	25	
1993	x		15	20		42	28	
1995	x		19	16		46	24	
1997	x		22	13		48	22	
1999	x		22	13		51	19	
2001	x		24	11		50	20	
2003	x		26	9		49	21	
2005	x		25	10		51	19	
2007	x		20	15		50	20	
2009	x		21	14		46	24	
2011	x		30	5		50	19	1
2013	x		28	7		53	17	

THE EIGHTY-EIGHTH LEGISLATURE

AGE

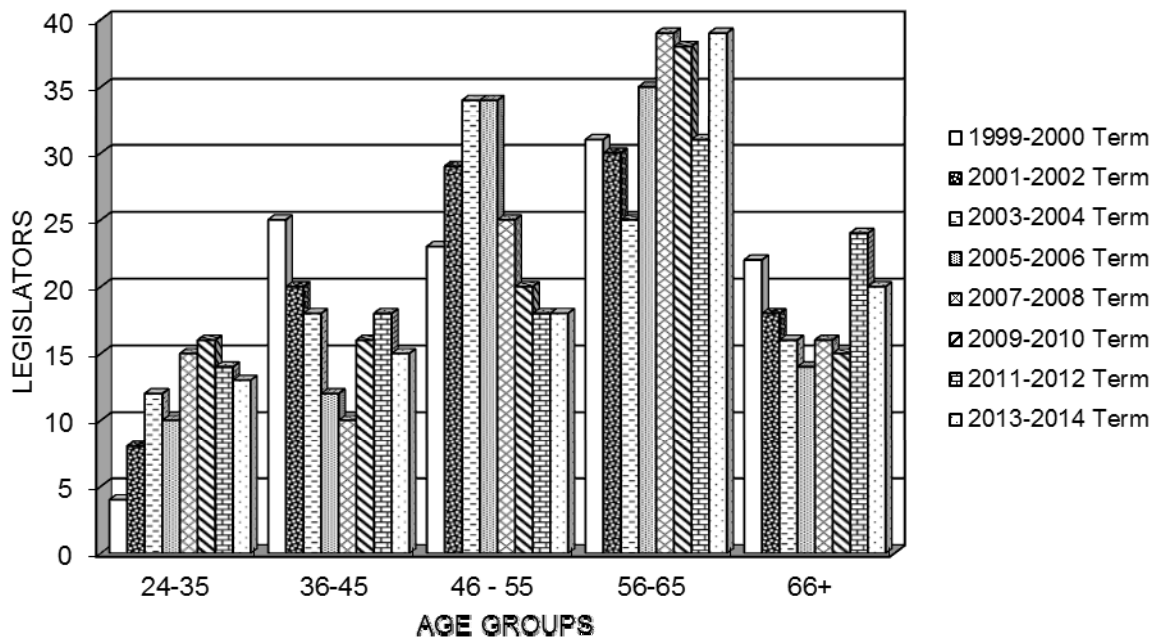
The age of legislators serving in the Eighty-eighth Legislature was slightly older than those legislators serving in the 2011-2012 legislative term. In 2013, 13 legislators (12.4%) were between twenty-four and thirty-five years of age; 15 legislators (14.3%) were thirty-six to forty-five; 18 legislators (17.1%) were forty-six to fifty-five; 39 legislators (37.1%) were fifty-six to sixty-five; and 20 legislators (19.0%) were sixty-six years of age or older.

By comparison, 14 legislators of the Eighty-sixth Legislature were between twenty-four and thirty-five years of age; 18 legislators were thirty-six to forty-five; 18 legislators were forty-six to fifty-five; 31 legislators were fifty-six to sixty-five; and 24 legislators were sixty-six years of age or older.

The Eighty-eighth Legislature is compared to previous legislative terms in Graphs 6 to 8.

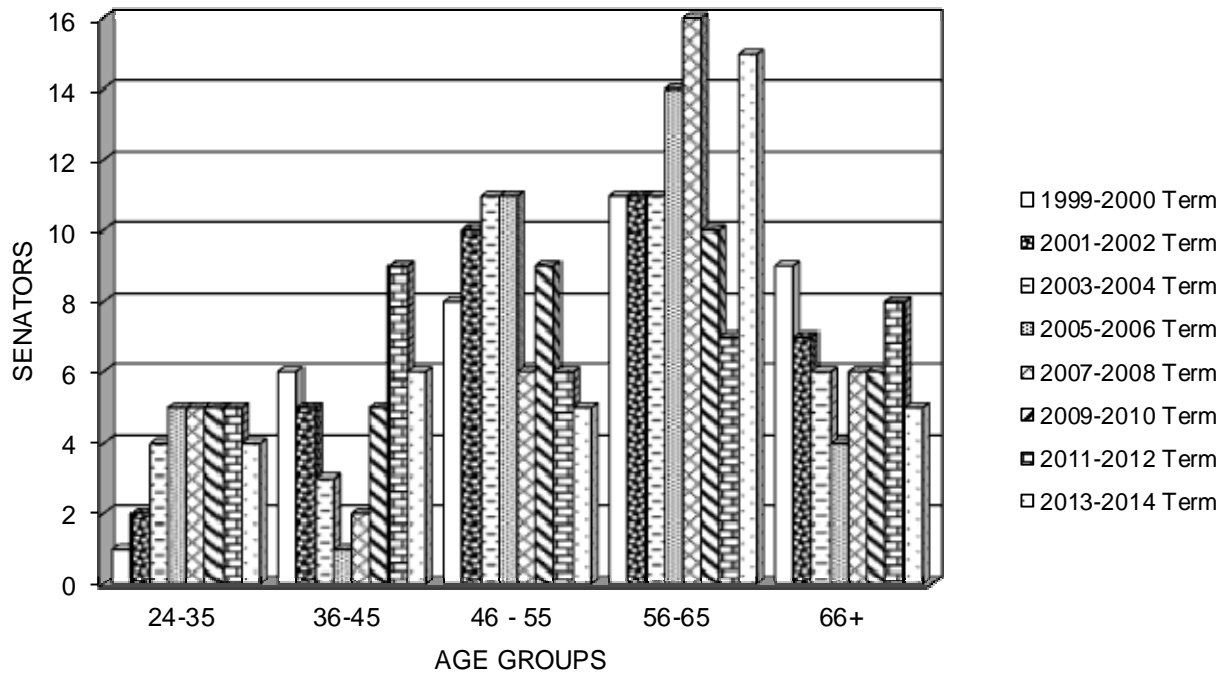
GRAPH 6

AGE OF LEGISLATORS



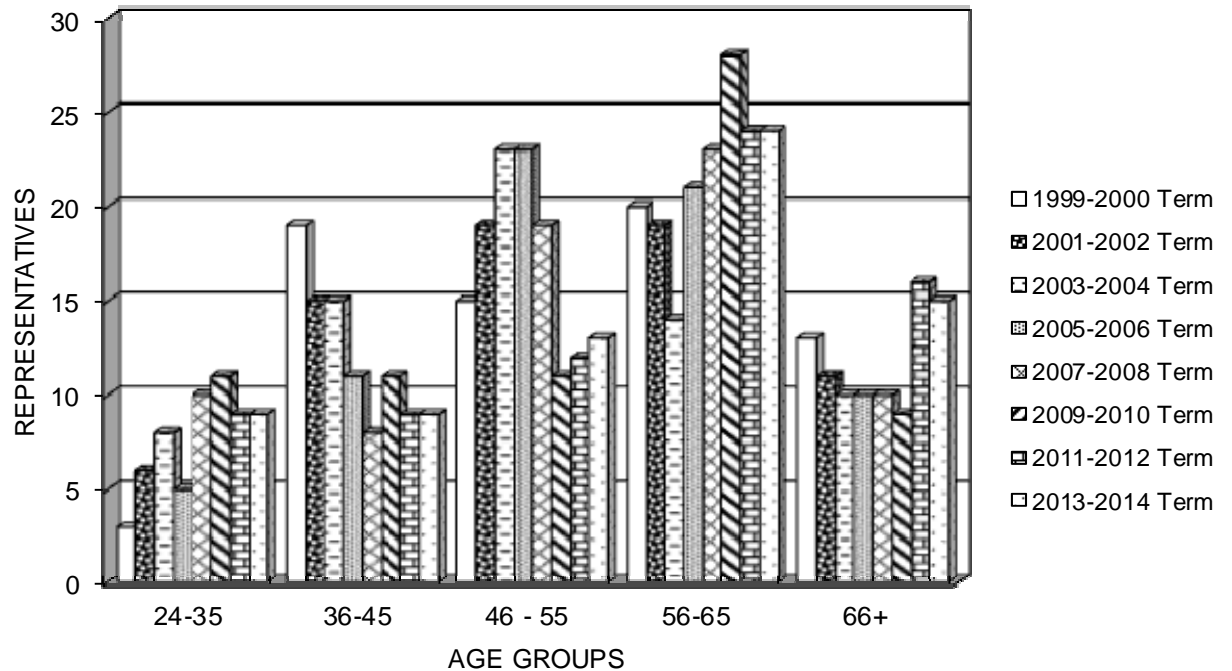
GRAPH 7

AGE OF SENATORS



GRAPH 8

AGE OF REPRESENTATIVES

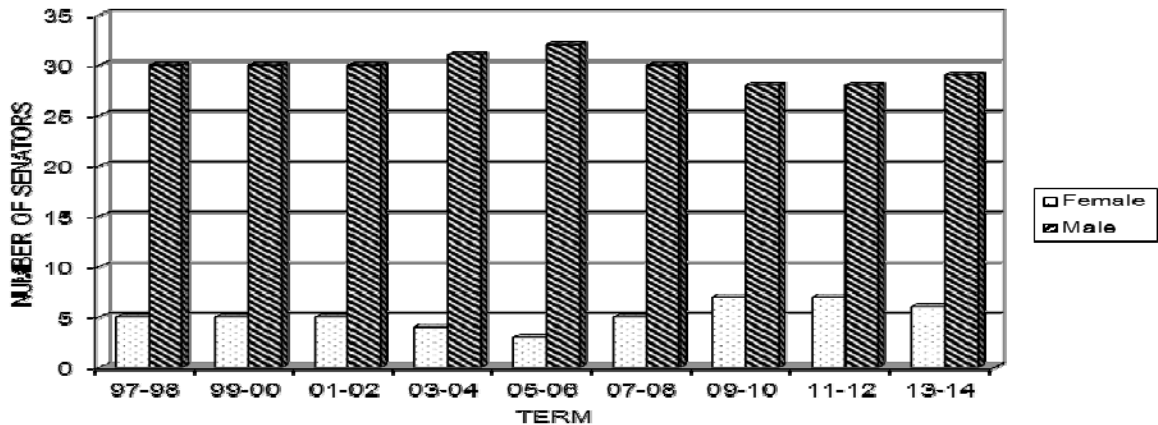


GENDER

Twenty-four women were elected to serve for the 2013-2014 legislative term – 18 women to the House and six women to the Senate. Only in the 1991-1992 legislative term, when 26 women served, were more women serving in the Legislature. The 18 women representatives is the most women representatives to ever serve in the House. The previous record was 17 women serving in the 1988 House. Women legislators in the 2013 Legislature made up 22.9 percent of the total Legislature. Across the United States in 2013, 24.0 percent of the state lawmakers were women. Table D shows the number of women that have served in the Legislature since 1923.

GRAPH 9

SENATORS' GENDER



GRAPH 10

REPRESENTATIVES' GENDER

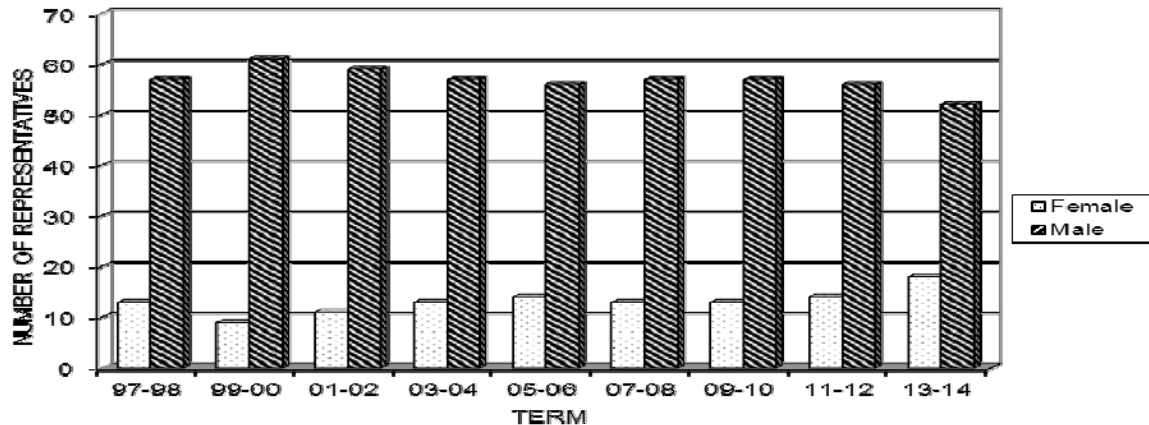


TABLE D
NUMBER OF WOMEN LEGISLATORS

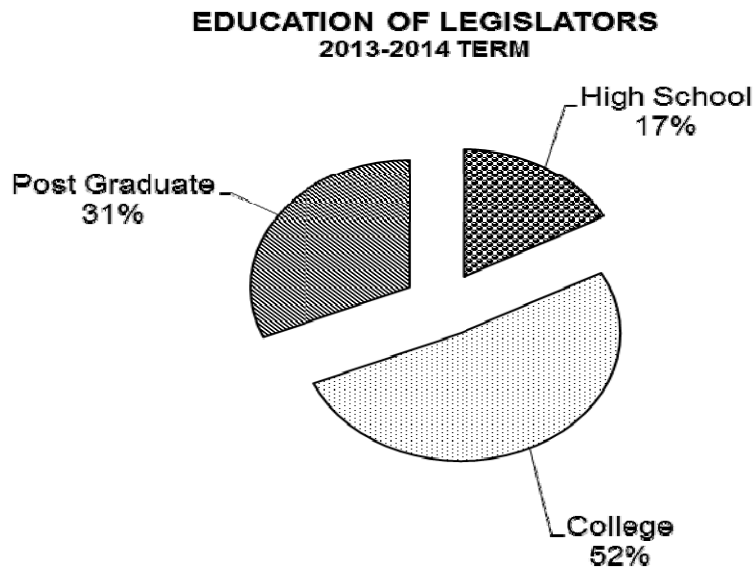
Year	House	Senate
1923	1	0
1925	4	0
1927	1	0
1929	0	0
1931	0	0
1933	1	0
1935	0	0
1937	0	1
1939	1	0
1941	0	0
1943	0	0
1945	0	0
1947	0	0
1949	0	0
1951	1	0
1953	3	0
1955	2	0
1957	1	0
1959	2	0
1961	3	0
1963	2	0
1964	2	0
1965	3	0
1967-68	2	0
1969-70	2	0
1971-72	3	0
1973-74	4	1
1975-76	7	5
1977-78	8	2
1979-80	6	3
1981-82	8	3
1983-84	12	3
1985-86	11	4
1987	16	5
1988	17	5
1989	13	8
1990	13	7
1991-92	15	11
1993-94	14	7
1995	14	5
1996	14	6
1997-98	13	5
1999	9	5
2000	10	5
2001	11	5
2002	11	6
2003-04	13	4
2005-06	14	3
2007-08	13	5
2009	13	7
2010	14	7
2011-12	14	7
2013	18	6

NOTE: First woman legislator: Representative Gladys Pyle (Beadle) (1923)
First woman senator: Senator Jesse Saunders (Pennington) (1937)

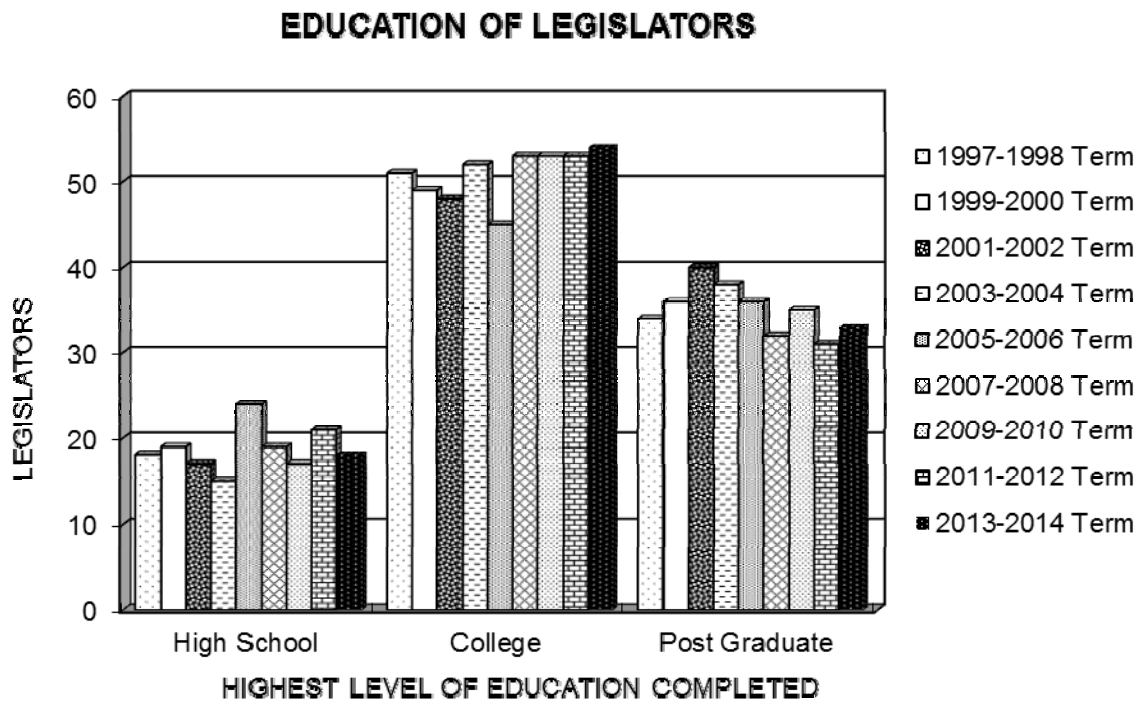
EDUCATION

The educational background of the Eighty-eighth Legislature is displayed and compared to previous legislative terms in the following graphs.

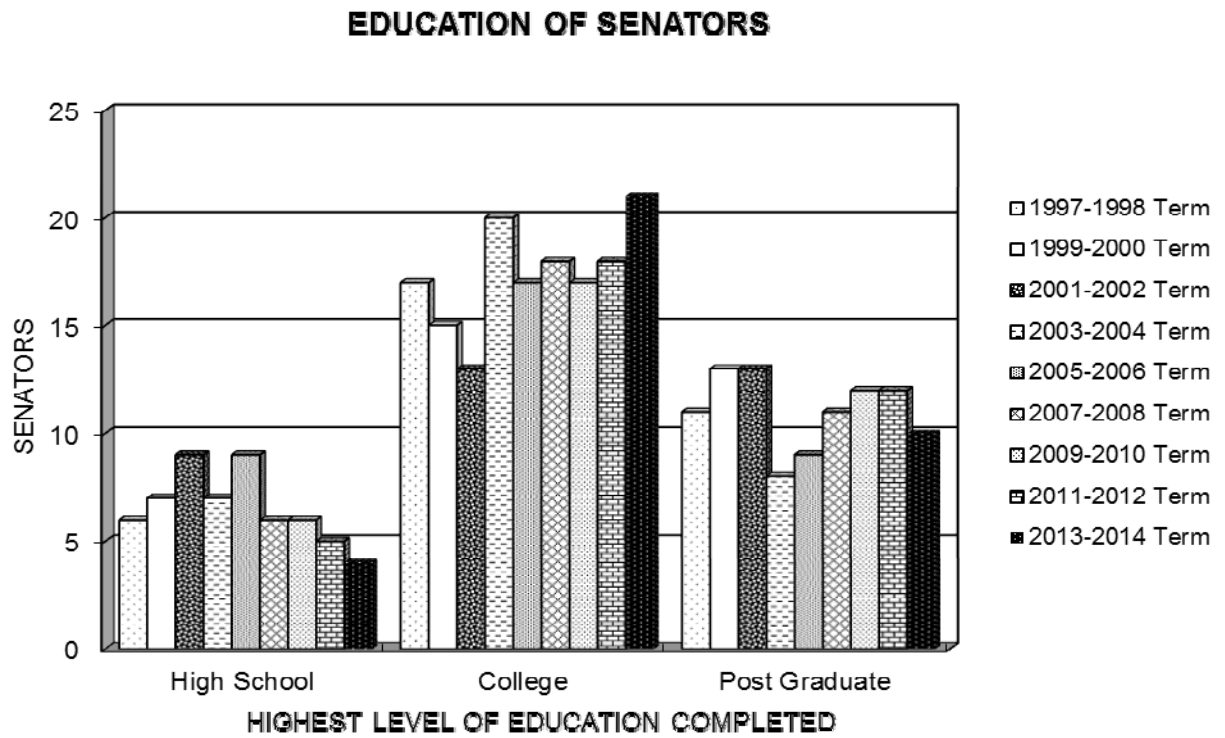
GRAPH 11



GRAPH 12

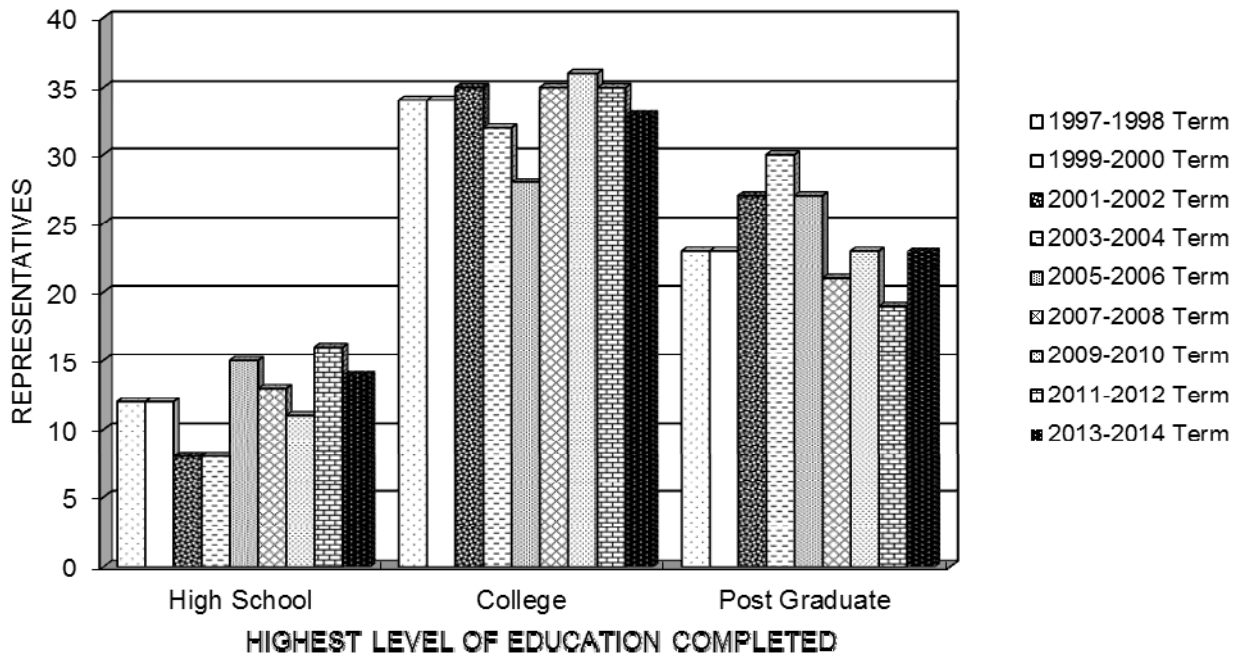


GRAPH 13



GRAPH 14

EDUCATION OF REPRESENTATIVES

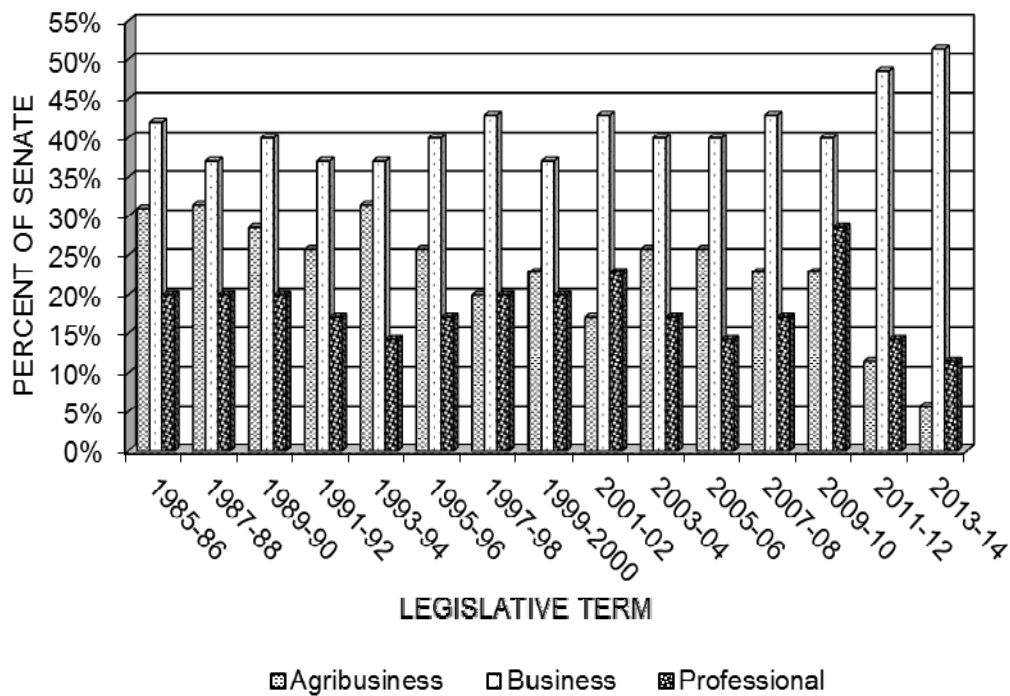


OCCUPATION

Only two senators in the 2013 Senate (6%) were primarily engaged in farming, ranching, or other form of agribusiness. Eighteen (51%) of the senators were primarily engaged in business and four (11%) of the senators were engaged in professions. Seven of the senators (20%) were retired or semi-retired from their occupations. This occupational data is compared with previous years in Graph 15.

GRAPH 15

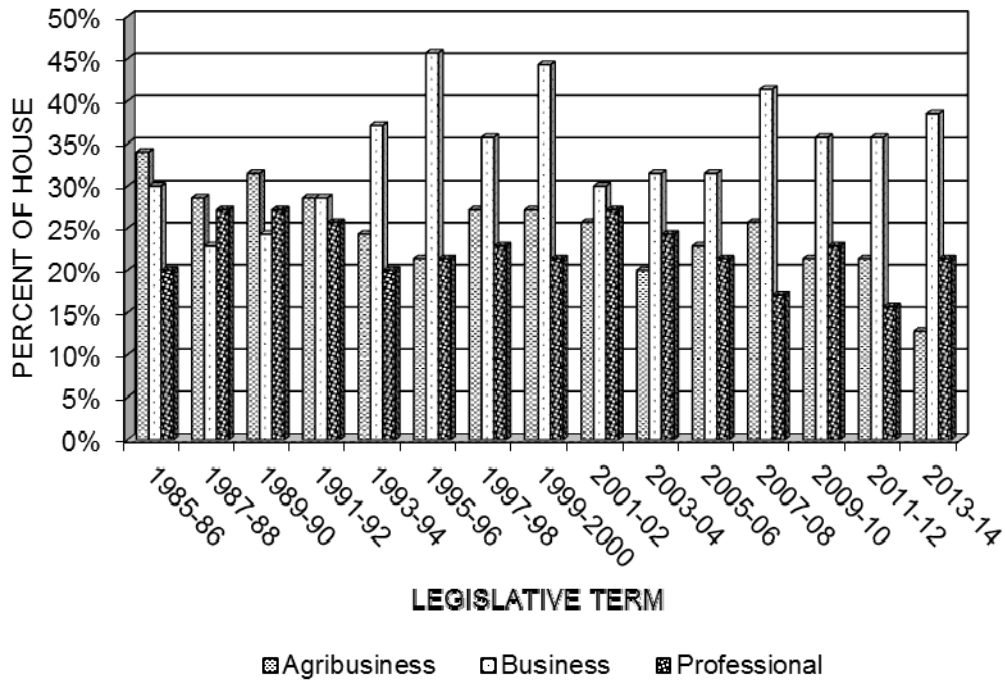
OCCUPATIONAL MAKEUP OF SENATE



Twenty-seven representatives in the 2013 House of Representatives (39%) were primarily engaged in business. Nine of the representatives (13%) were farmers, ranchers, or otherwise involved in agribusiness. Fifteen of the representatives (21%) were engaged in professions. Twelve of the House members (17%) were retired or semi-retired from their occupations. The occupational data is compared with previous years in Graph 16.

GRAPH 16

**OCCUPATIONAL MAKEUP
OF HOUSE**



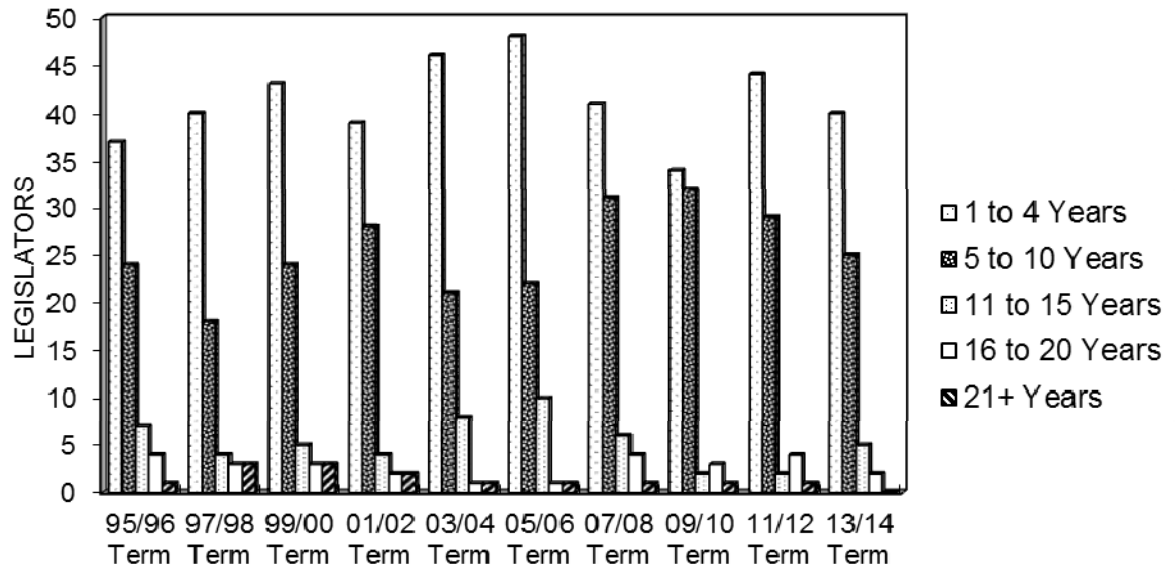
TENURE

The 2013 Senate included 12 new senators. Seven of the new members had previous legislative experience. Five of these new Senate members were representatives in 2012. The new senators comprised 34 percent of the entire Senate membership.

The average length of legislative service prior to 2013 by all senators was 5.7 years. The Republicans had an average of 5.8 years of prior legislative service, and the Democrats' average prior legislative service was 5.4 years. The greatest length of prior legislative service by a senator was 16 years. This data is compared with data from previous legislative terms in Table E and Graph 18.

GRAPH 17

LEGISLATOR TENURE
All Legislators



Thirty-one new representatives served in the 2013 House of Representatives. For 28, it was their first experience as legislators. Three had served in the Legislature in the past. These new representatives comprised 44 percent of the entire House of Representatives membership. Twelve of the representatives were beginning their second term and 16 were beginning their third term.

The average length of prior legislative service of all House members was 2.9 years. The Democrats had an average of 3.9 years of prior legislative service and the Republicans' average prior legislative service was 2.6 years. The greatest length of prior legislative service by a representative was 16 years. This data is compared with data from previous legislative terms in Table F and Graph 19.

TABLE E

**PRIOR LEGISLATIVE SERVICE OF SENATE MEMBERS
(in years)**

	2001-2002	2003-2004	2005-2006	2007-2008	2009-2010	2011-2012	2013-2014
Average prior legislative service per senator	7.4	6.5	6.3	6.2	5.7	5.8	5.7
Senate Democrats average prior legislative service	9.8	10.9	6.8	5.3	6.6	4.4	5.4
Senate Republicans average prior legislative service	6.2	4.9	6.1	6.8	5.0	6.1	5.8
Greatest length of prior legislative service	22	20	14	16	18	23	16

GRAPH 18

**LEGISLATOR TENURE
In Senate**

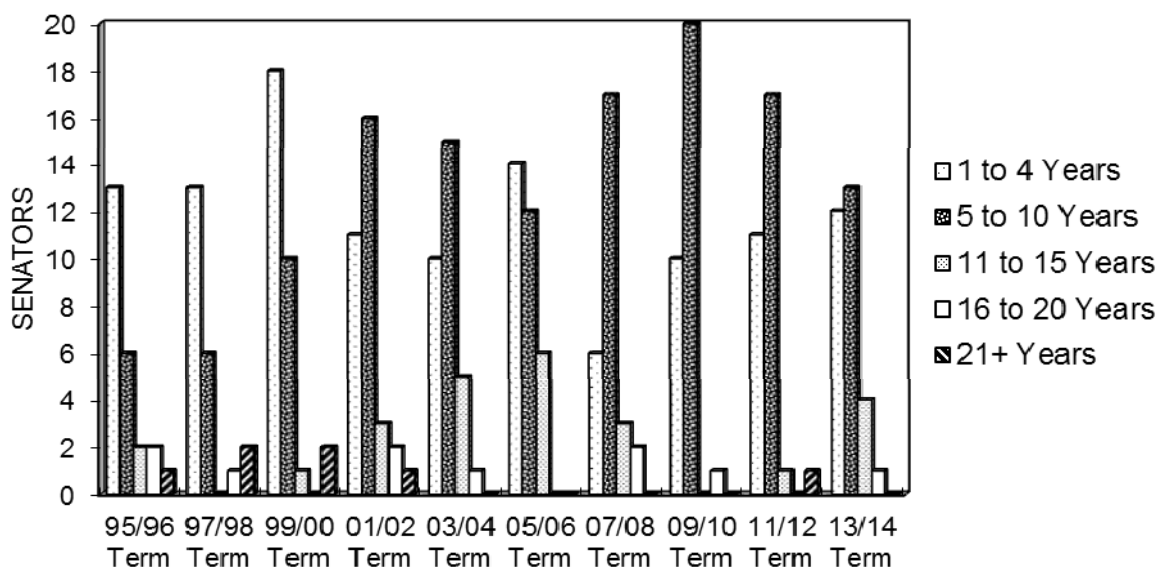


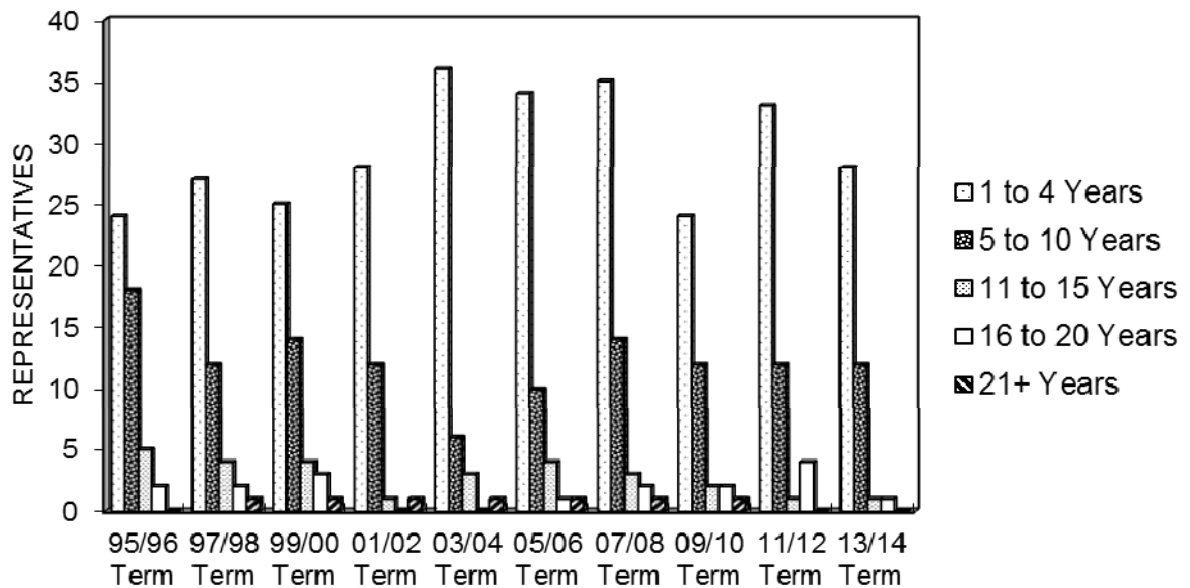
TABLE F

**PRIOR LEGISLATIVE SERVICE OF HOUSE MEMBERS
(in years)**

	2001-2002	2003-2004	2005-2006	2007-2008	2009-2010	2011-2012	2013-2014
Average prior legislative service per representative	2.9	2.9	3.7	4.2	3.3	3.7	2.9
House Democrats average prior legislative service	3.1	3.0	4.5	5.3	3.3	5.4	3.9
House Republicans average prior legislative service	2.8	2.9	3.3	3.8	3.2	3.1	2.6
Greatest length of prior legislative service	22	24	26	28	21	20	16

GRAPH 19

**LEGISLATOR TENURE
In House of Representatives**

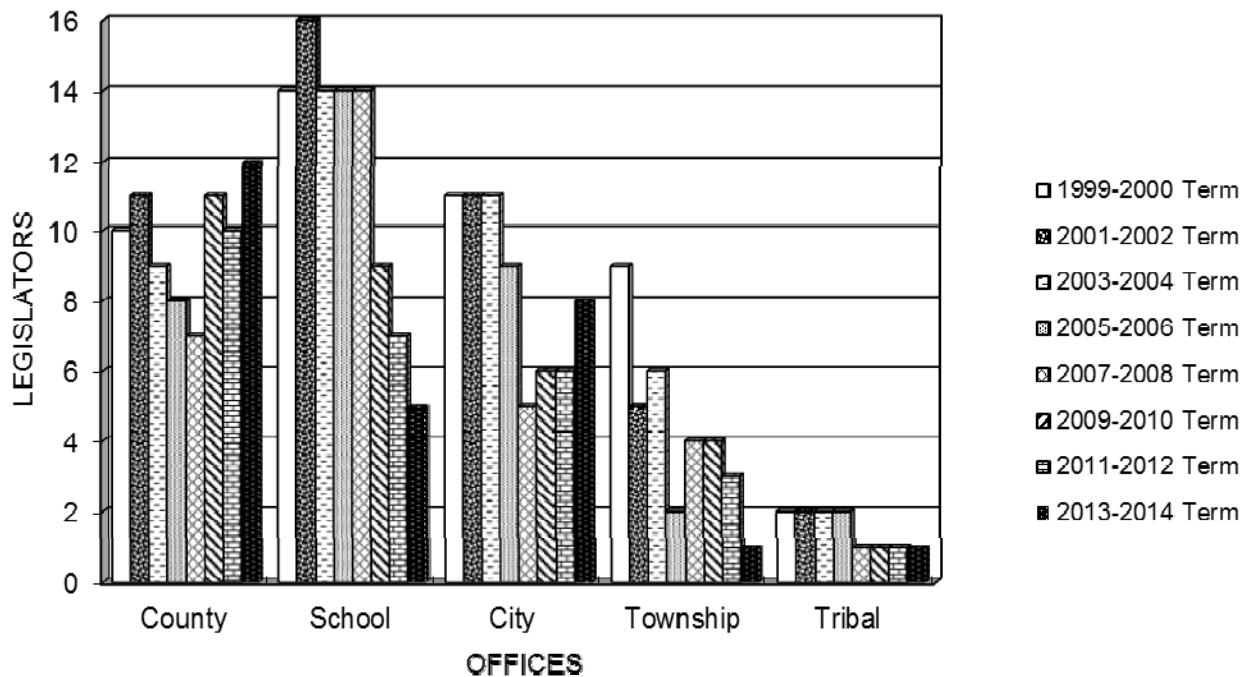


PUBLIC SERVICE

In the 2013 Legislature, 25 members held at least one other public office before serving in the Legislature. Five legislators had been school board members and twelve legislators had held county positions. Eight legislators had been city officials, one had been a township official, and one had held a tribal office. This data is compared with data from previous legislative terms in the following graph.

GRAPH 20

OTHER PUBLIC OFFICES HELD ALL LEGISLATORS



THE SENATE

The **Senate** leadership for the Eighty-eighth Legislature was as follows:

Senate Leadership

The **Senate** leadership for the Eighty-eighth Legislature was as follows:

President:

Lt. Governor Matt Michels, Yankton

President Pro Tempore:

Corey Brown, Gettysburg

Majority Leader:

Russell Olson, Wentworth

Assistant Majority Leader:

Timothy Rave, Baltic

Majority Whips:

Dan Lederman, Dakota Dunes

Ryan Maher, Isabel

Larry Rhoden, Union Center

Minority Leader:

Jason Frerichs, Wilmot

Assistant Minority Leader:

Billie Sutton, Burke

Minority Whip:

Jim Bradford, Pine Ridge

Minority Caucus Chair

Angie Buhl, Sioux Falls

THE HOUSE OF REPRESENTATIVES

House of Representatives Leadership

The **House of Representatives** leadership for the Eighty-eighth Legislature was as follows:

Speaker:

Brian Gosch, Rapid City

Speaker Pro Tempore:

Dean Wink, Howes

Majority Leader:

David Lust, Rapid City

Assistant Majority Leader:

Justin Cronin, Gettysburg

Majority Whips:

Kristin Conzet, Rapid City

Jon Hansen, Dell Rapids

Scott Munsterman, Brookings

Jacqueline Sly, Rapid City

Minority Leader:

Bernie Hunhoff, Yankton

Assistant Minority Leader:

Julie Bartling, Gregory

Minority Whips:

Peggy Gibson, Huron

Scott Parsley, Madison

Jim Petersen, Revillo

THE LEGISLATIVE COMMITTEES

The 2013 Legislature was divided into 13 standing committees. The committees and their membership were as follows:

	Senate	House
1. Agriculture and Natural Resources	9	13
2. Appropriations	9	9
3. Commerce and Energy	7	13
4. Education	7	15
5. Government Operations and Audit	5	5
6. Health and Human Services	7	13
7. Judiciary	7	13
8. Legislative Procedure	7	7
9. Local Government	7	13
10. Retirement Laws	5	5
11. State Affairs	9	13
12. Taxation	7	15
13. Transportation	7	13

The workload of the various committees in 2013 and over the past 9 years is summarized in Table G on pages 24 and 25.

The number of standing committees each legislative session since 1891 is summarized in Table H on page 28.

TABLE G**TOTAL NUMBER OF BILLS AND RESOLUTIONS REFERRED TO COMMITTEES FOR
YEARS 2004 THROUGH 2013****SENATE**

COMMITTEE	2004	2005	2006	2007	2008	2009	2010	2011	2012	2013
AGRICULTURE & NATURAL RESOURCES	26	33	29	38	32	29	23	18	27	51
APPROPRIATIONS	52	31	62	52	60	41	36	31	46	51
COMMERCE & ENERGY	63	63	49	51	60	53	48	51	48	47
EDUCATION	27	42	38	46	49	37	34	32	27	28
HEALTH & HUMAN SERVICES	33	29	23	44	24	30	24	28	35	31
GOVERNMENT OPERATIONS & AUDIT	0	2	2	8	5	0	1	0	0	0
JUDICIARY	68	60	65	80	66	56	58	53	59	36
LEGISLATIVE PROCEDURE	0	0	1	0	0	0	0	0	0	0
LOCAL GOVERNMENT	27	38	24	33	20	28	30	45	34	33
RETIREMENT LAWS	10	5	7	0	7	2	4	3	3	4
STATE AFFAIRS	68	48	55	62	51	65	56	44	50	70
TAXATION	27	37	39	32	26	24	27	15	24	22
TRANSPORTATION	<u>33</u>	<u>32</u>	<u>24</u>	<u>19</u>	<u>30</u>	<u>28</u>	<u>28</u>	<u>19</u>	<u>24</u>	<u>30</u>
TOTAL By Year	434	420	418	465	430	393	369	339	377	403

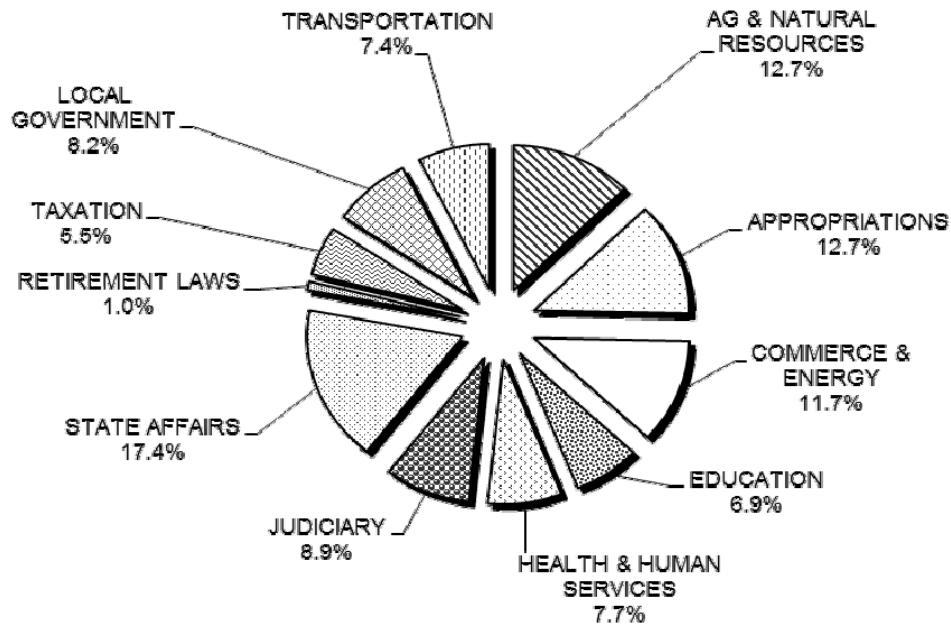
TABLE G (continued)

HOUSE OF REPRESENTATIVES

COMMITTEE	2004	2005	2006	2007	2008	2009	2010	2011	2012	2013
AGRICULTURE & NATURAL RESOURCES	29	27	28	33	37	34	30	29	36	43
APPROPRIATIONS	44	39	50	55	55	49	43	42	50	32
COMMERCE & ENERGY	55	50	48	54	67	73	51	50	46	45
EDUCATION	36	34	30	54	56	45	35	26	27	30
HEALTH & HUMAN SERVICES	36	31	28	33	20	22	25	27	31	29
GOVERNMENT OPERATIONS & AUDIT	0	3	2	5	6	0	1	0	0	0
JUDICIARY	75	64	66	90	75	70	65	66	76	61
LEGISLATIVE PROCEDURE	0	0	0	0	0	0	0	0	0	0
LOCAL GOVERNMENT	34	29	32	44	34	40	40	48	38	34
RETIREMENT LAWS	9	5	6	0	9	3	4	3	3	4
STATE AFFAIRS	77	62	53	57	67	68	65	68	75	74
TAXATION	35	40	35	30	22	34	37	22	27	18
TRANSPORTATION	<u>40</u>	<u>31</u>	<u>25</u>	<u>24</u>	<u>31</u>	<u>27</u>	<u>30</u>	<u>19</u>	<u>26</u>	<u>29</u>
TOTAL By Year	470	415	403	479	479	465	426	400	435	399

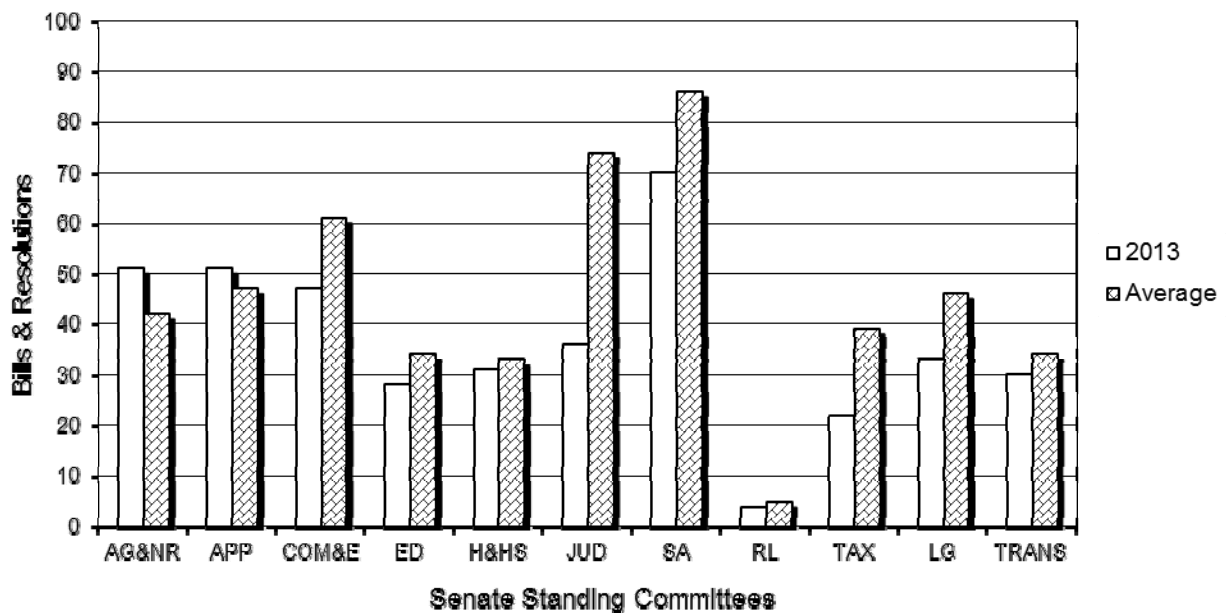
GRAPH 21

**2013 DISTRIBUTION OF BILLS
To Senate Committees**



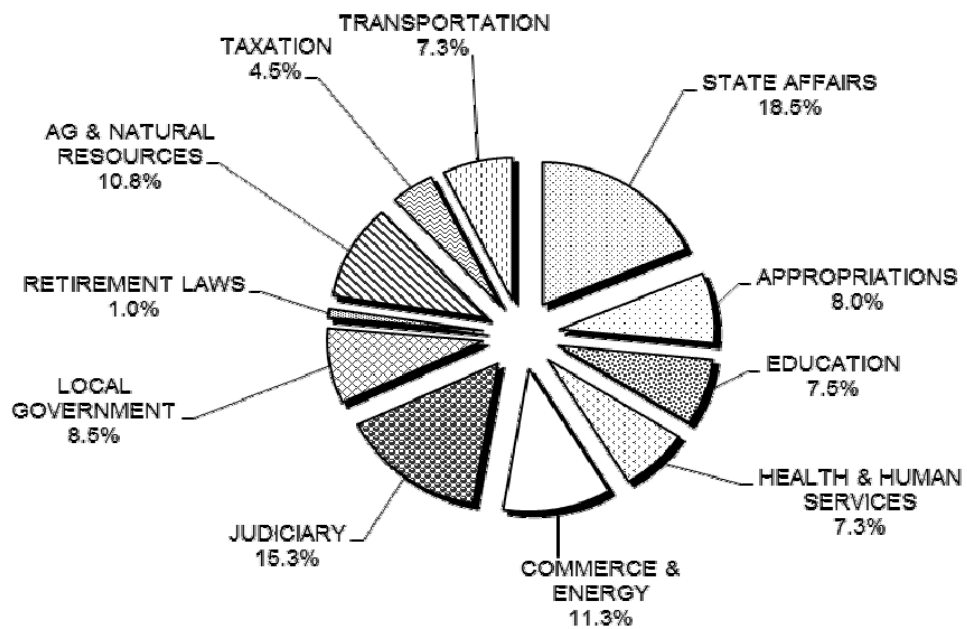
GRAPH 22

**2013 SENATE COMMITTEE WORKLOAD
Compared to Average Year**



GRAPH 23

**2013 DISTRIBUTION OF BILLS
To House Committees**



GRAPH 24

**2013 HOUSE COMMITTEE WORKLOAD
Compared to Average Year**

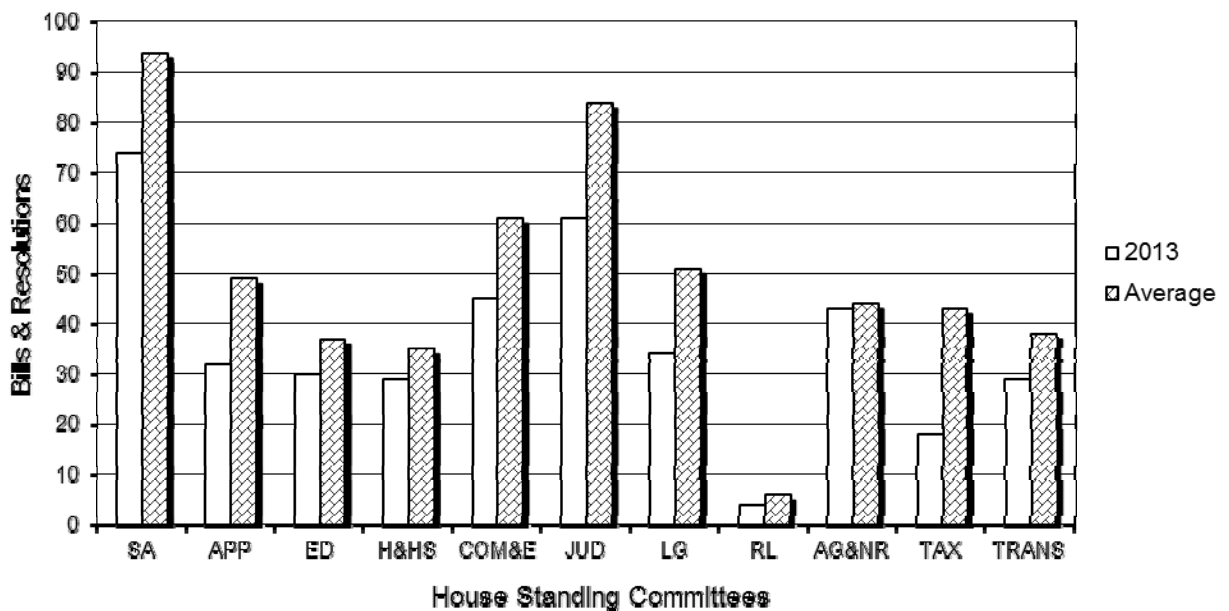
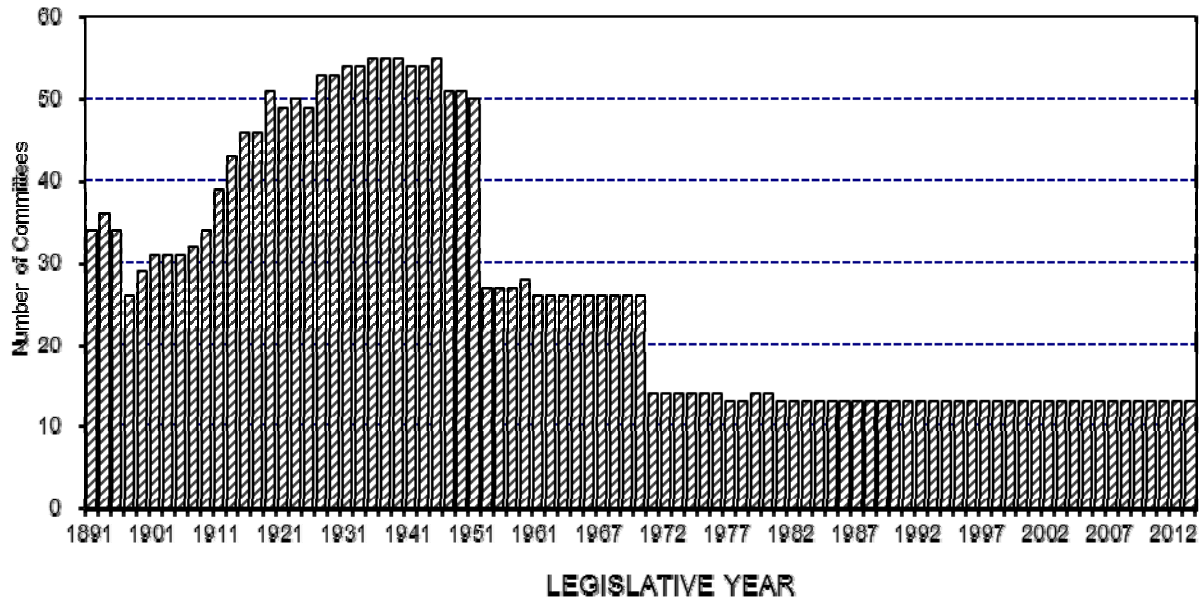


TABLE H**NUMBER OF STANDING LEGISLATIVE COMMITTEES EACH SESSION
FOR YEARS 1891 THROUGH 2013**

YEAR	SENATE	HOUSE	YEAR	SENATE	HOUSE
1891	34	34	1972	14	14
1893	36	32	1973	14	14
1895	34	35	1974	14	14
1897	26	33	1975	14	14
1899	29	33	1976	14	14
1901	31	38	1977	13	13
1903	31	39	1978	13	13
1905	31	42	1979	14	14
1907	32	42	1980	14	14
1909	34	43	1981	13	13
1911	39	47	1982	13	13
1913	43	50	1983	13	13
1915	46	49	1984	13	13
1917	46	50	1985	13	13
1919	51	51	1986	13	13
1921	49	55	1987	13	13
1923	50	54	1988	13	13
1925	49	56	1989	13	13
1927	53	56	1990	13	13
1929	53	59	1991	13	13
1931	54	59	1992	13	13
1933	54	59	1993	13	13
1935	55	59	1994	13	13
1937	55	59	1995	13	13
1939	55	58	1996	13	13
1941	54	58	1997	13	13
1943	54	54	1998	13	13
1945	55	55	1999	13	13
1947	51	51	2000	13	13
1949	51	51	2001	13	13
1951	50	51	2002	13	13
1953	27	51	2003	13	13
1955	27	50	2004	13	13
1957	27	50	2005	13	13
1959	28	50	2006	13	13
1961	26	27	2007	13	13
1963	26	25	2008	13	13
1964	26	25	2009	13	13
1965	26	26	2010	13	13
1966	26	27	2011	13	13
1967	26	27	2012	13	13
1968	26	27	2013	13	13
1969	26	27			
1970	26	27			
1971	14	14			

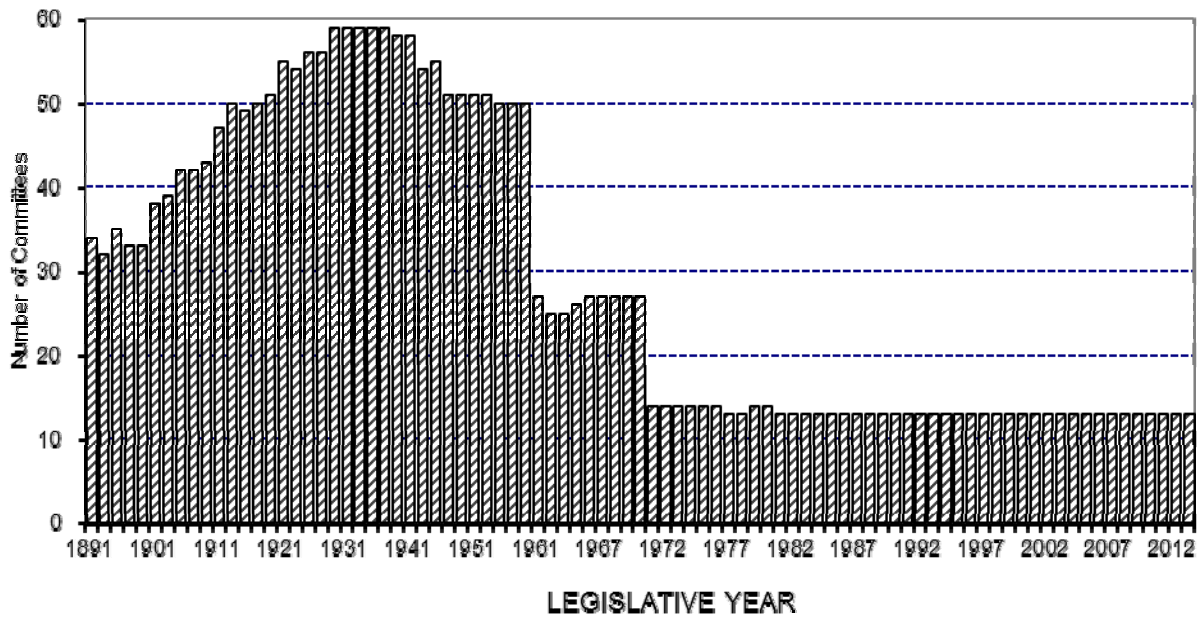
GRAPH 25

SENATE COMMITTEES
Number Each Legislative Session



GRAPH 26

HOUSE COMMITTEES
Number Each Legislative Session



2013 DISPOSITION OF BILLS AND RESOLUTIONS

During the 2013 Legislative Session, 492 bills were introduced. This number was 21 more than in 2012 and was 93 fewer than the average number of bills previously introduced in a 40-day session. The highest number of bills ever introduced in a legislative session was in 1957 when 929 bills were introduced. The lowest number of bills ever introduced was 432 in 1964.

There were 242 Senate bills introduced. The number of Senate bills introduced was 45 more than in 2012 and was 11 fewer than the average number of Senate bills previously introduced in a 40-day session. The record for the highest number of Senate bills introduced in a legislative session is 405 which was set in 1913. The record for the fewest Senate bills was set in 2002 when only 187 Senate bills were introduced.

Two hundred fifty House bills were introduced. The number of House bills was 24 fewer than in 2012 and was 82 fewer than the average number of bills previously introduced in a 40-day session. The record for the highest number of House bills introduced in a legislative session occurred in 1957 when 576 were introduced. The fewest number of House bills ever introduced occurred in 1905 when only 212 were introduced.

Of all the bills introduced in 2013, 261 passed both houses of the Legislature and were delivered to the Governor. The Governor vetoed one bill and the veto was sustained by the Legislature. The Governor also issued a line item veto of the general appropriations bill and a line item veto of a special appropriations bill. Those line item vetoes were sustained by the Legislature. The 260 bills that became law were 65 fewer than the average number of bills previously enacted in a 40-day session and were seven fewer than became law in 2012. The most bills ever enacted in a single session occurred in 1957 when 505 bills were enacted. The fewest bills were enacted in 1897 when only 104 bills became law.

In 2013, 52.8 percent of the bills introduced were enacted. This was below the previous average of 55.5 percent for a 40-day session. This was slightly lower than in 2012 when 53.7 percent was enacted. The highest percentage of bills ever enacted in a single session

occurred in 1947 when 73.1 percent of that year's bills were enacted. The lowest percentage of bills ever enacted in a single session occurred in 1897 when only 18.6 percent of the bills were enacted. In 2013, 56.4 percent of the House bills introduced were enacted. This was higher than the previous average percentage of House bills enacted in a 40-day session of 55.5 percent. Also, 49.2 percent of the Senate bills introduced were enacted. This was below the previous average percentage of Senate bills enacted in a 40-day session of 55.6 percent.

The number of bills vetoed in 2013 (1) was six fewer than the average number of bills vetoed each year. Only in the years 1933 and 1955 were no bills vetoed by the Governor. The most bills vetoed occurred in 1980 when 30 bills were vetoed.

The number of concurrent resolutions introduced in 2013 was 17. This was seven fewer than was introduced in 2012. Fifteen of the concurrent resolutions introduced in 2013 were adopted.

There were three House joint resolutions and four Senate joint resolution introduced in 2013. None of the joint resolutions were adopted. The number of joint resolutions introduced was three fewer than introduced in 2012.

There were 98 House commemorations and 34 Senate commemorations introduced and approved in the 2013 Legislature. This was the most House commemorations to ever be introduced. The number of Senate commemorations tied the 2009 Legislature for the most ever to be introduced. Since the Legislature started issuing commemorations in 1989, there has been an average of 21 Senate commemorations and 29 House commemorations each session.

TABLE I
DISPOSITION OF SENATE BILLS
2013

Failed in Senate committee	84
Failed on Senate floor	14
Failed in House committee	16
Failed on House floor	5
Failed to concur	3
Vetoed	1
Enacted	<u>119</u>
Total	242

GRAPH 27

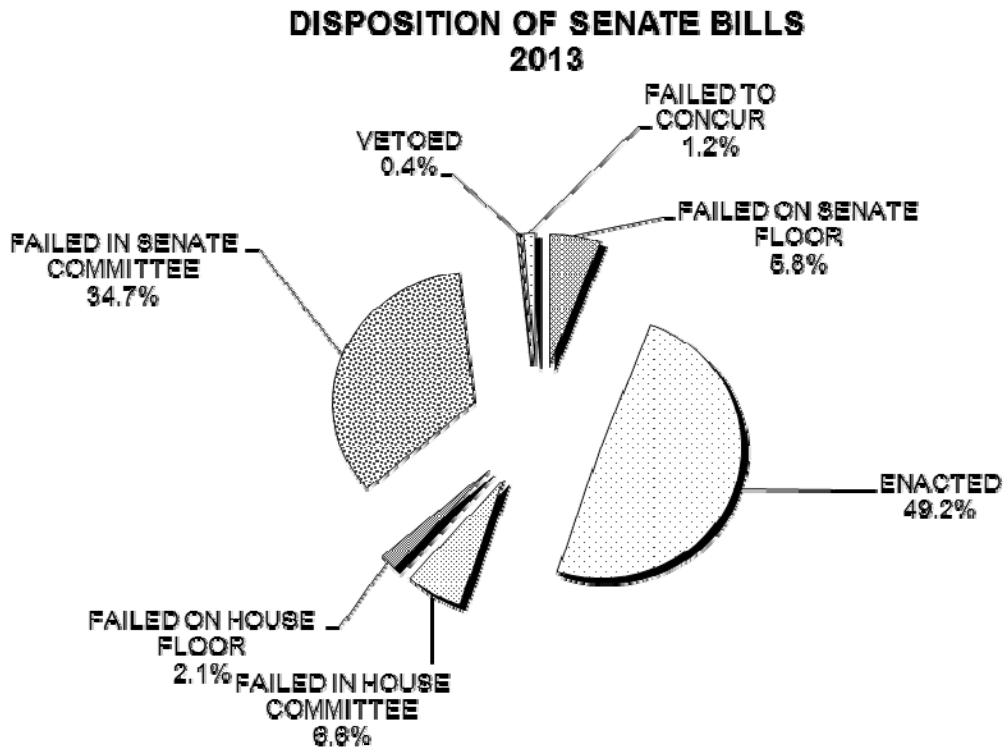
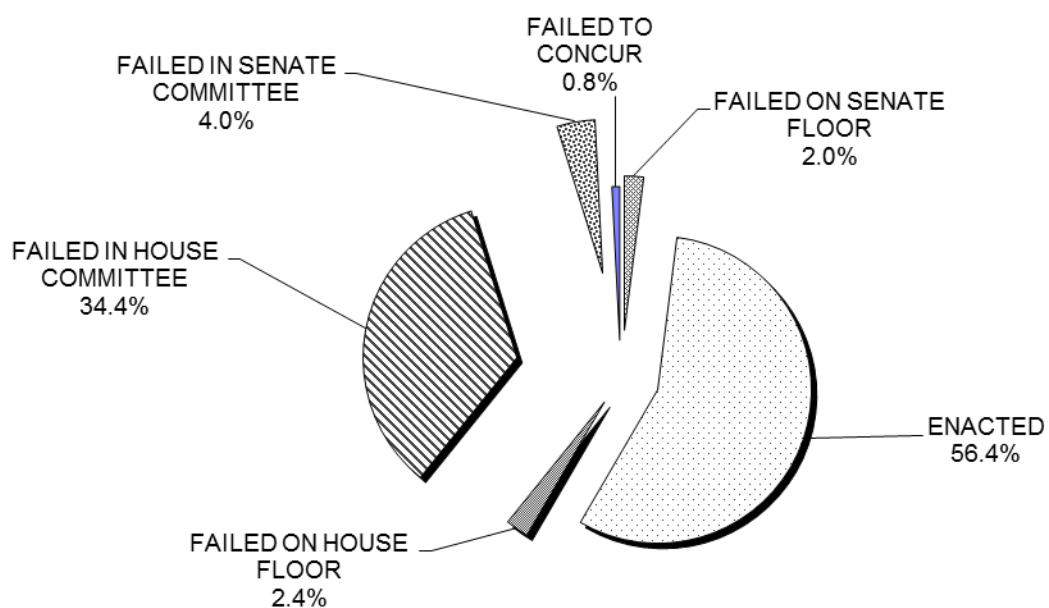


TABLE J
DISPOSITION OF HOUSE BILLS
2013

Failed in House committee	86
Failed on House floor	6
Failed in Senate committee	10
Failed on Senate floor	5
Failed to concur	2
Vetoed	0
Enacted	<u>141</u>
Total	250

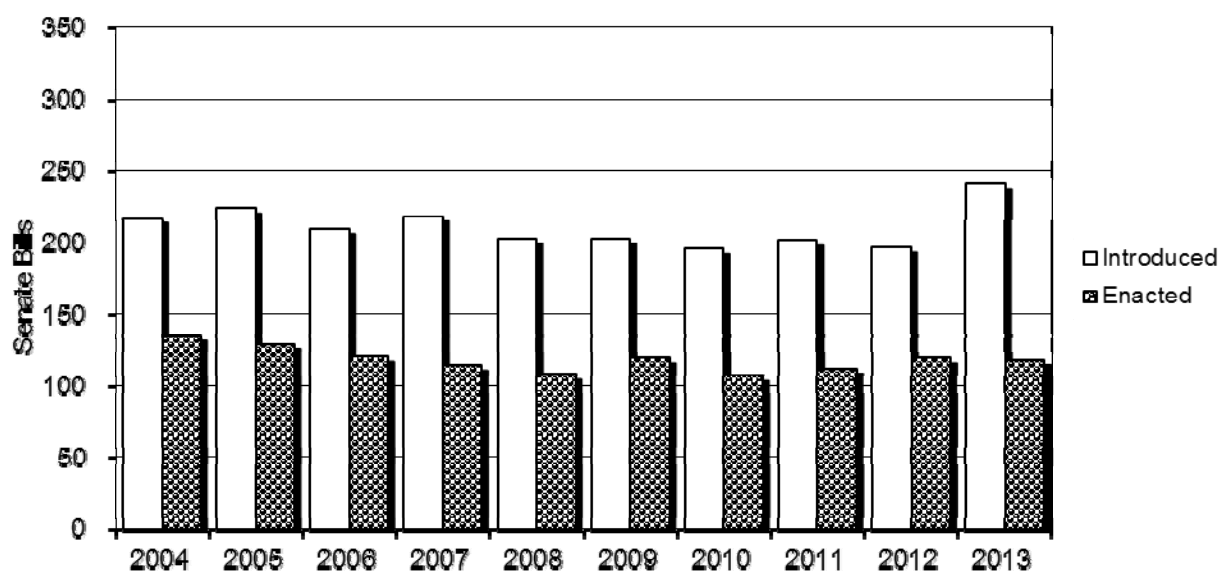
GRAPH 28

DISPOSITION OF HOUSE BILLS
2013



GRAPH 29

**DISPOSITION OF SENATE BILLS
2004-2013**



GRAPH 30

**DISPOSITION OF HOUSE BILLS
2004-2013**

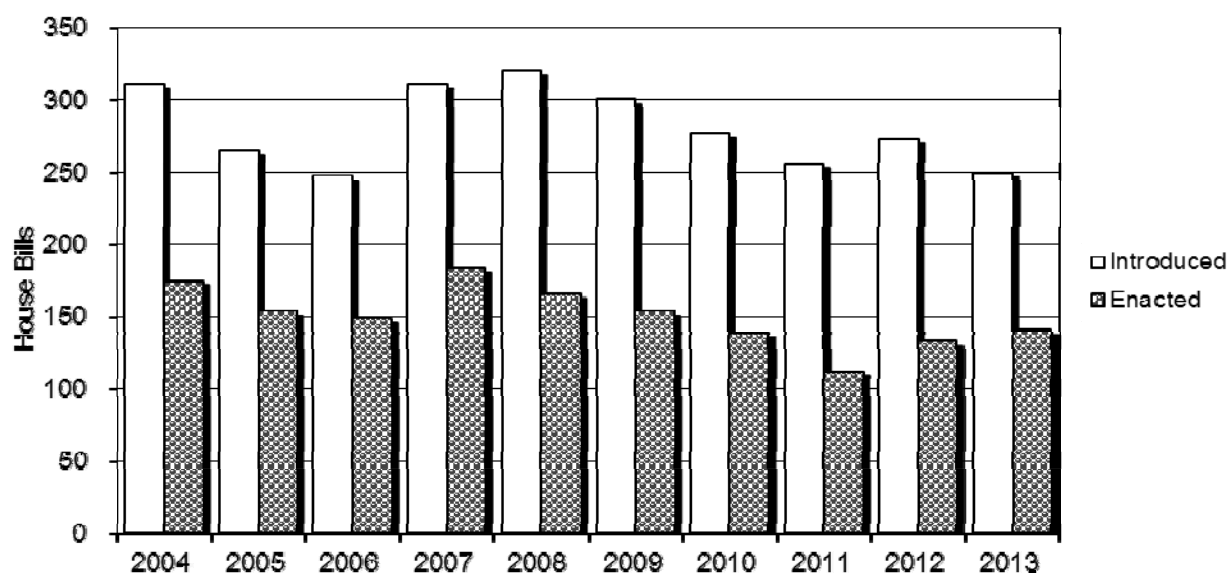


TABLE K

DISPOSITION OF SENATE BILLS FOR YEARS 1890 THROUGH 2013

Session	Introduced	Delivered	Enacted	Percent Enacted
1890#	270	64	60	22.2%
1891#	263	66	64	24.3%
1893#	316	106	100	31.6%
1895#	370	79	74	20.0%
1897#	249	55	52	20.9%
1899#	299	74	66	22.1%
1901#	226	86	85	37.6%
1903#	233	103	99	42.5%
1905#	245	98	94	38.4%
1907#	291	120	119	40.9%
1909#	333	127	126	37.8%
1911#	322	113	110	34.2%
1913#	405	148	135	33.3%
1915#	318	153	151	47.5%
1917#	304	166	161	53.0%
1919#	275	197	195	70.9%
1921#	348	216	209	60.1%
1923#	335	153	151	42.5%
1925#	319	179	178	55.8%
1927#	268	106	101	37.7%
1929#	231	118	115	49.8%
1931#	241	129	128	53.1%
1933#	215	98	98	45.6%
1935#	222	119	117	52.7%
1937#	283	134	131	46.3%
1939#	322	126	124	38.5%
1941#	377	194	191	50.7%
1943#	235	154	151	64.3%
1945#	299	217	217	72.6%
1947#	267	215	214	80.1%
1949#	292	217	216	74.0%
1951#	326	234	232	71.2%
1953#	351	231	228	65.0%
1955#	393	221	221	56.2%
1957#	353	165	164	46.5%
1959#	386	204	199	51.6%
1961#	372	227	220	59.1%
1963**	371	222	218	58.8%
1964*	193	111	110	57.0%
1965**	251	132	131	52.2%
1966*	200	104	103	51.5%
1967**	256	141	140	54.7%
1968*	213	117	114	53.5%
1969**	240	125	121	50.4%
1970*	220	113	110	50.0%
1971**	250	120	115	46.0%
1972*	278	123	120	43.2%
1973**	239	117	117	49.0%
1974*	263	154	154	58.6%
1975**	333	176	175	52.6%
1976*	274	130	125	45.6%

TABLE K (continued)

Session	Introduced	Delivered	Enacted	Percent Enacted
1977**	291	151	149	51.2%
1978*	343	165	159	46.4%
1979**	272	161	155	57.0%
1980*	256	153	141	55.1%
1981***	248	146	136	54.8%
1982****	245	159	152	62.0%
1983***	257	162	159	61.9%
1984****	223	134	128	57.4%
1985***	311	189	186	59.8%
1986****	293	184	179	61.1%
1987***	285	160	152	53.3%
1988****	348	211	204	58.6%
1989***	328	196	194	59.1%
1990****	342	181	179	52.3%
1991***	268	167	163	60.8%
1992****	273	169	166	60.8%
1993***	312	176	173	55.4%
1994****	269	149	146	54.3%
1995***	242	124	120	49.6%
1996****	287	147	142	49.5%
1997***	272	153	149	54.8%
1998****	242	139	135	55.8%
1999***	252	125	119	47.2%
2000****	209	109	109	52.2%
2001***	255	137	132	51.8%
2002****	187	102	100	53.5%
2003***	226	125	123	54.4%
2004****	218	138	136	62.4%
2005***	225	132	130	57.8%
2006****	210	121	121	57.6%
2007***	219	118	115	52.5%
2008****	203	110	109	53.7%
2009***	203	120	120	59.1%
2010***	196	110	108	55.1%
2011***	202	115	113	55.9%
2012****	197	121	120	60.9%
2013***	242	120	119	49.2%

Averages	Introduced	Delivered	Enacted	Percent Enacted
# 60-Day Biennial	301	146	143	47.5%
** 45-Day Sessions	278	149	147	52.8%
* 30-Day Sessions	249	130	126	50.7%
*** 40-Day Sessions+	252	143	140	55.3%
**** 35-Day Sessions++	250	145	142	56.8%

+ Includes 39-day session in 1985, 1999, and 2010 and 38-day session in 2011 and 2013

++ Includes 34-day session in 1998 and 2000 and 33-day session in 2012

TABLE L**DISPOSITION OF HOUSE BILLS FOR YEARS 1890 THROUGH 2013**

Session	Introduced	Delivered	Enacted	Percent Enacted
1890#	362	83	82	22.7%
1891#	307	50	48	15.6%
1893#	266	71	71	26.7%
1895#	352	92	90	25.6%
1897#	310	55	52	16.8%
1899#	272	63	60	22.1%
1901#	282	105	100	35.5%
1903#	297	125	124	41.8%
1905#	212	83	79	37.3%
1907#	303	132	130	42.9%
1909#	423	169	169	40.0%
1911#	416	164	154	37.0%
1913#	497	206	205	41.2%
1915#	398	148	144	36.2%
1917#	427	200	198	46.4%
1919#	281	168	168	59.8%
1921#	370	214	209	56.5%
1923#	334	160	159	47.6%
1925#	287	124	123	42.9%
1927#	271	129	122	45.0%
1929#	292	135	133	45.5%
1931#	328	144	141	43.0%
1933#	314	107	107	34.1%
1935#	225	93	91	40.4%
1937#	262	131	128	48.9%
1939#	318	173	171	53.8%
1941#	389	184	179	46.0%
1943#	248	168	166	66.9%
1945#	218	141	138	63.3%
1947#	310	212	208	67.1%
1949#	353	230	226	64.0%
1951#	365	239	237	64.9%
1953#	444	268	267	60.1%
1955#	422	221	221	52.4%
1957#	576	343	341	59.2%
1959#	526	268	260	49.4%
1961#	496	257	247	49.8%
1963**	469	253	252	53.7%
1964*	239	123	118	49.4%
1965**	399	186	182	45.6%
1966*	353	165	164	46.5%
1967**	394	218	214	54.3%
1968*	350	166	161	46.0%
1969**	394	171	167	42.4%
1970*	367	195	194	52.9%
1971**	380	193	188	49.5%
1972*	373	175	172	46.1%
1973**	410	238	237	57.8%
1974*	391	229	224	57.3%
1975**	342	175	172	50.3%
1976*	388	203	196	50.5%

TABLE L (continued)

Session	Introduced	Delivered	Enacted	Percent Enacted
1977**	448	270	260	58.0%
1978*	365	215	204	55.9%
1979**	343	201	191	55.7%
1980*	372	228	215	57.8%
1981***	383	245	237	61.9%
1982****	333	222	218	65.5%
1983***	368	239	228	62.0%
1984****	358	218	210	58.7%
1985***	373	213	207	55.5%
1986****	391	250	245	62.7%
1987***	371	238	235	63.3%
1988****	349	213	209	59.9%
1989***	433	256	256	59.1%
1990****	388	235	235	60.6%
1991***	417	258	254	60.9%
1992****	350	203	199	56.9%
1993***	356	212	206	57.9%
1994****	395	254	254	64.3%
1995***	360	185	178	49.4%
1996****	364	168	164	45.1%
1997***	285	159	151	53.0%
1998****	330	165	162	49.1%
1999***	304	142	141	46.4%
2000****	318	148	144	45.3%
2001***	298	166	160	53.7%
2002****	305	145	142	46.6%
2003***	284	136	135	47.5%
2004****	312	178	175	56.1%
2005***	266	158	154	57.9%
2006****	248	151	149	60.1%
2007***	312	186	184	59.0%
2008****	321	170	166	51.7%
2009***	301	155	154	51.2%
2010***	278	141	139	50.0%
2011***	256	113	113	44.1%
2012****	274	135	133	48.5%
2013***	250	141	141	56.4%

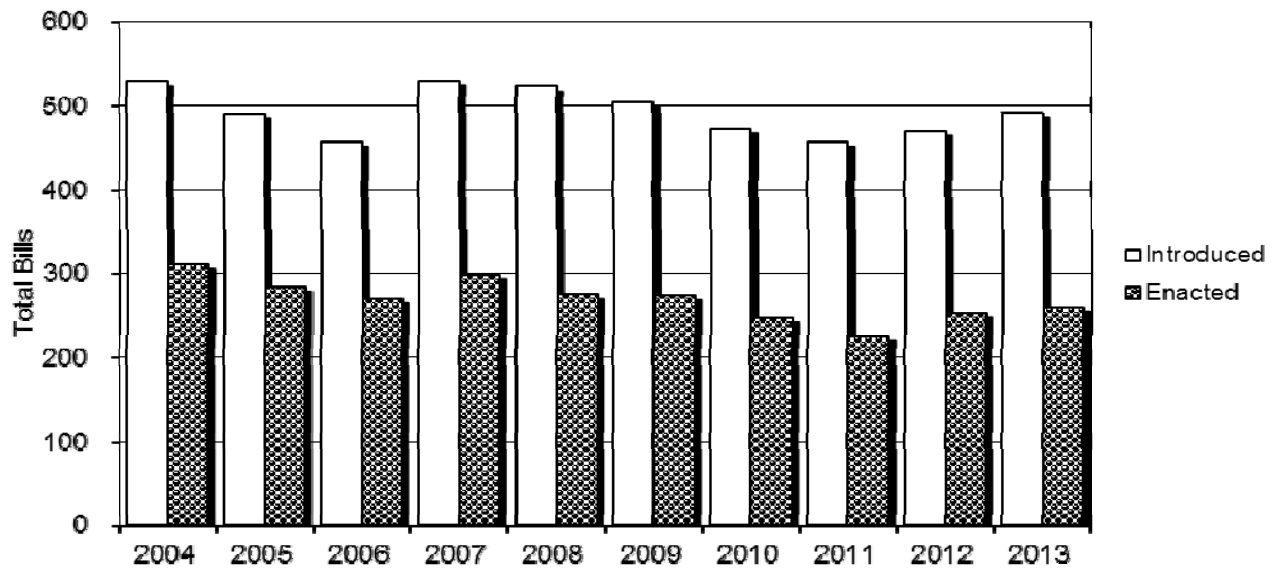
Averages	Introduced	Delivered	Enacted	Percent Enacted
# 60-Day Biennial	345	158	155	45.1%
** 45-Day Sessions	398	212	207	52.1%
* 30-Day Sessions	355	189	183	51.5%
*** 40-Day Sessions+	328	186	182	55.5%
**** 35-Day Sessions++	336	190	187	55.7%

+ Includes 39-day session in 1985, 1999, and 2010 and 38-day session in 2011 and 2013

++ Includes 34-day session in 1998 and 2000 and 33-day session in 2012

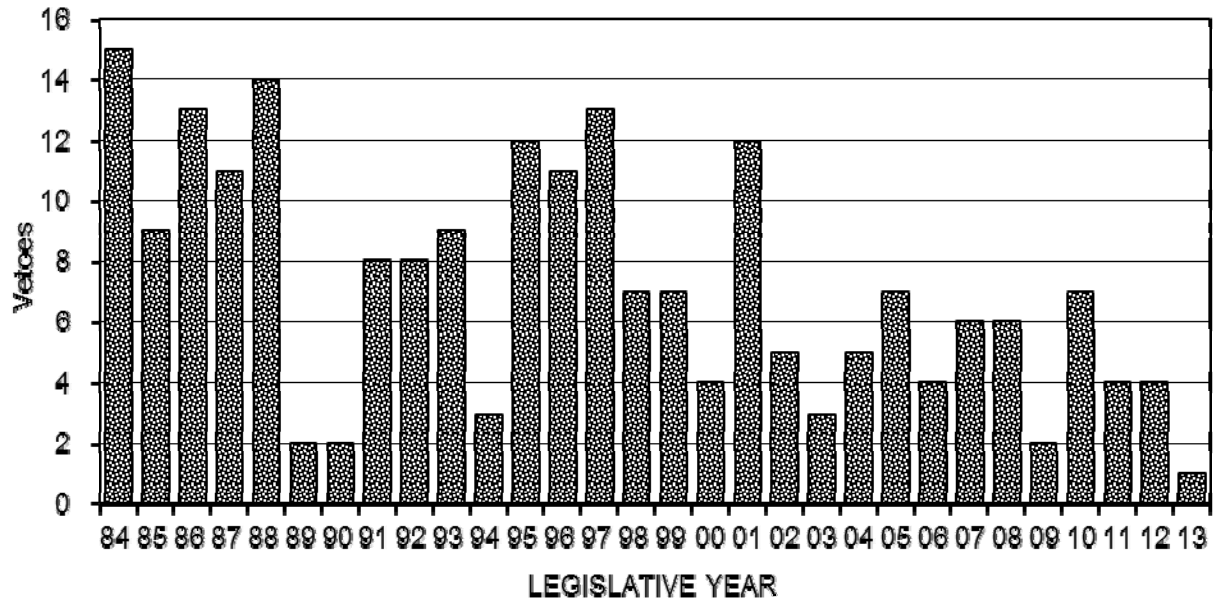
GRAPH 31

**DISPOSITION OF LEGISLATIVE BILLS
2004-2013**



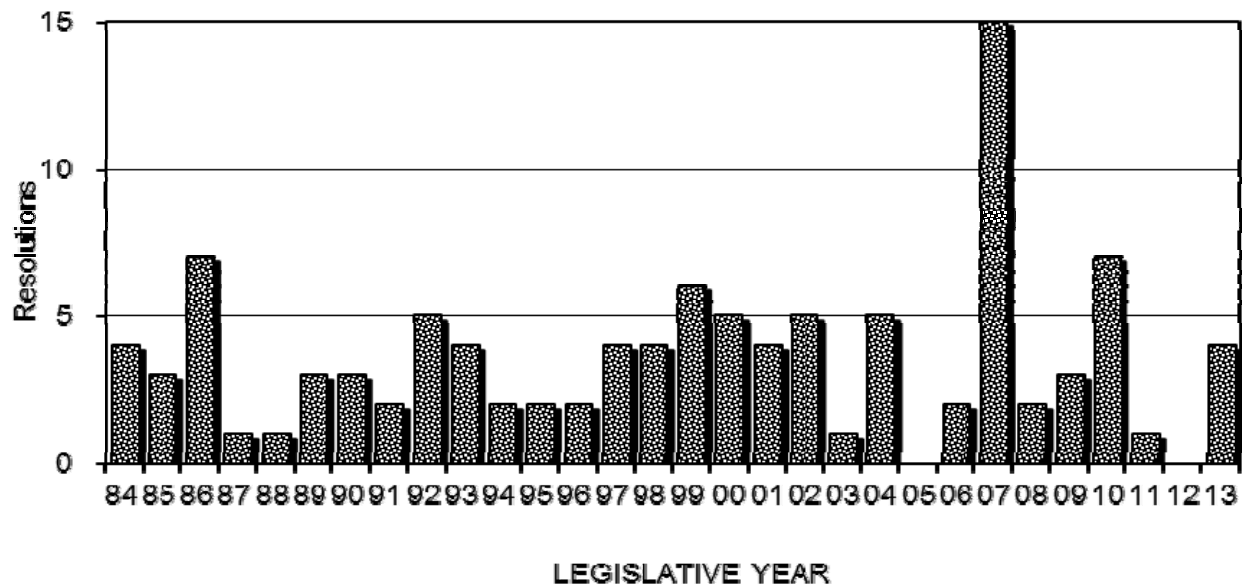
GRAPH 32

VETOES **1984-2013**



GRAPH 33

SENATE JOINT RESOLUTIONS **Introduced 1984-2013**



GRAPH 34

HOUSE JOINT RESOLUTIONS
Introduced 1984-2013

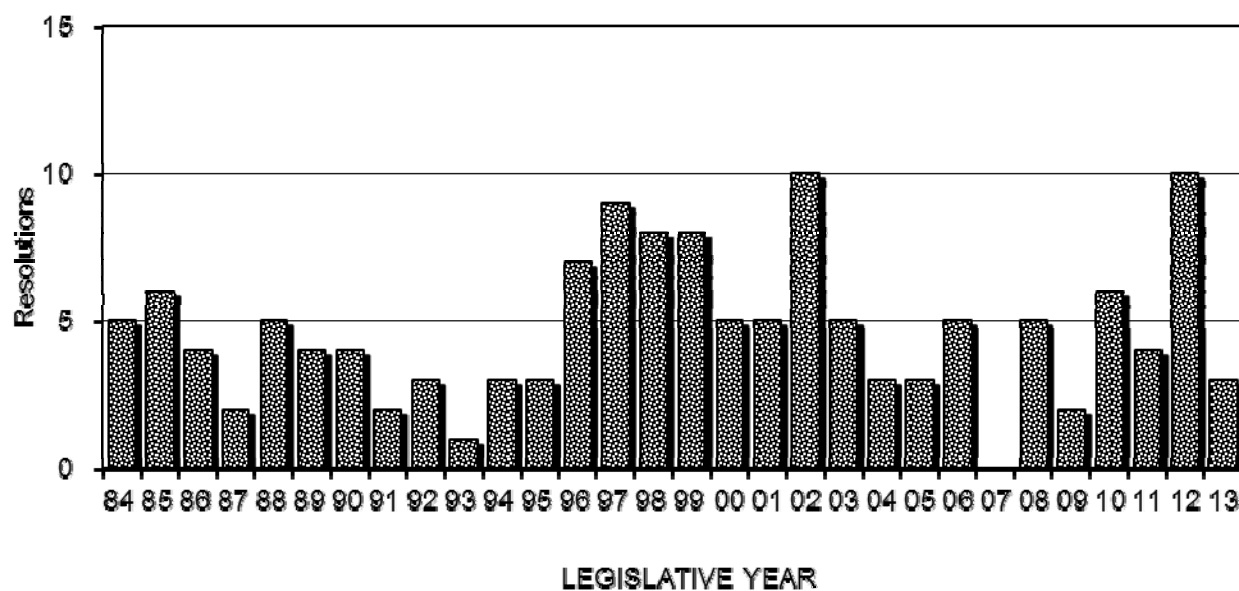


TABLE M

DISPOSITION OF ALL LEGISLATIVE BILLS FOR YEARS 1890 THROUGH 2013

Session	Introduced	Delivered	Vetoed ^a	Enacted	Percent Enacted
1890#	632	147	5	142	22.5%
1891#	570	116	4	112	19.6%
1893#	582	177	6	171	29.4%
1895#	722	171	7	164	22.7%
1897#	559	110	6	104	18.6%
1899#	571	137	11	126	22.1%
1901#	508	191	6 ^b	185	36.4%
1903#	530	228	5	223	42.1%
1905#	457	181	8	173	37.9%
1907#	594	252	3	249	41.9%
1909#	756	296	1	295	39.0%
1911#	738	277	13	264	35.8%
1913#	902	354	14	340	37.7%
1915#	716	301	6	295	41.2%
1917#	731	366	7	359	49.1%
1919#	556	365	2	363	65.3%
1921#	718	430	12	418	58.2%
1923#	669	313	3	310	46.3%
1925#	606	303	2	301	49.7%
1927#	539	235	12	223	41.4%
1929#	523	253	5	248	47.4%
1931#	569	273	4	269	47.3%
1933#	529	205	0	205	38.8%
1935#	447	212	4	208	46.5%

1937#	545	265	6	259	47.5%
1939#	640	299	4	295	46.1%
1941#	766	378	8	370	48.3%
1943#	483	322	5	317	65.6%
1945#	517	358	3	355	68.7%
1947#	577	427	5	422	73.1%
1949#	645	447	5	442	68.5%
1951#	691	473	4	469	67.9%
1953#	795	499	4	495	62.3%
1955#	815	442	0	442	54.2%
1957#	929	508	3	505	54.4%
1959#	912	472	13	459	50.3%
1961#	868	484	17 ^b	467	53.8%
1963**	840	475	5	470	56.0%
1964*	432	234	6	228	52.8%
1965**	650	318	5	313	48.2%
1966*	553	269	2	267	48.3%
1967**	650	359	6	354	54.5%
1968*	563	283	8	275	48.8%
1969**	634	296	8	288	45.4%
1970*	587	308	4	304	51.8%
1971**	630	313	10	303	48.1%
1972*	651	298	6	292	44.8%
1973**	649	355	1	354	54.6%
1974*	654	383	5	378	57.8%
1975**	675	351	4	347	51.4%
1976*	662	333	12	321	48.5%
1977**	739	421	28	409	55.4%

TABLE M (continued)

Session	Introduced	Delivered	Vetoed^a	Enacted	Percent Enacted
1978*	708	380	18	363	51.3%
1979**	615	362	18	346	56.3%
1980*	628	381	31 ^b	356	56.7%
1981***	631	391	20	373	59.1%
1982****	578	381	11	370	64.0%
1983***	625	401	16	387	61.9%
1984****	581	352	15	338	58.2%
1985***	684	402	9	393	57.5%
1986****	684	434	13	424	62.0%
1987***	656	398	11 ^b	387	59.0%
1988****	697	424	14	413	59.3%
1989***	761	452	2	450	59.1%
1990****	730	416	2	414	56.7%
1991***	685	425	8	417	60.9%
1992****	623	372	8	365	58.6%
1993***	668	388	9	379	56.7%
1994****	664	403	3	400	60.2%
1995***	602	309	12 ^b	298	49.5%
1996****	651	315	11	306	47.0%
1997***	557	312	13	300	53.9%
1998****	572	304	7	297	51.9%
1999***	556	267	7	260	46.8%
2000****	527	257	4	253	48.0%
2001***	553	303	12	292	52.8%
2002****	492	247	5	242	49.2%
2003***	510	261	3	258	50.6%
2004****	530	316	5 ^b	311	58.7%

2005***	491	290	7	284	57.8%
2006****	458	272	4	270	59.0%
2007***	531	304	6	299	56.3%
2008****	524	280	6	275	52.5%
2009***	504	275	2	274	54.4%
2010***	474	251	7	247	50.7%
2011***	458	228	4	226	49.3%
2012****	471	256	4	253	53.7%
2013***	492	261	1	260	52.8%

a - All bills vetoed, including those overridden, but doesn't include line item vetoes

b - Includes one bill returned for style and form changes but not approved by the Legislature

Averages	Introduced	Delivered	Enacted	Percent Enacted
# 60-Day Biennial	646	305	299	46.2%
** 45-Day Sessions	676	361	354	52.4%
* 30-Day Sessions	604	319	309	51.2%
*** 40-Day Sessions+	580	329	321	55.4%
**** 35-Day Sessions++	585	335	329	56.1%

+ Includes 39-day session in 1985, 1999, and 2010 and 38-day session in 2011 and 2013

++ Includes 34-day session in 1998 and 2000 and 33-day session in 2012

TABLE N

BILLS VETOED BY THE GOVERNOR FOR YEARS 1890 THROUGH 2013

Session	Total Bills Vetoed^a	House Bills Vetoed	Senate Bills Vetoed	Veto Overridden^b	Line Items Vetoed in General Appropriations Bill
1890	5	1	4	---	0
1891	4	2	2	---	0
1893	6	0	6	---	0
1895	7	2	5	---	0
1897	6	3	3	---	4
1899	11	3	8	---	3
1901	6 ^c	5 ^c	1	---	0
1903	5	1	4	---	0
1905	8	4	4	---	0
1907	3	2	1	---	0
1909	1	0	1	---	0
1911	13	10	3	---	0
1913	14	1	13	---	0
1915	6	4	2	---	4
1917	7	2	5	---	0
1919	2	0	2	---	0
1921	12	5	7	---	0
1923	3	1	2	---	0
1925	2	1	1	---	2
1927	12	7	5	---	16 ^d
1929	5	2	3	---	1
1931	4	3	1	---	0
1933	0	0	0	---	0
1935	4	2	2	---	0
1937	6	3	3	---	0
1939	4	2	2	---	0
1941	8	5	3	---	0
1943	5	2	3	---	0
1945	3	3	0	---	0
1947	5	4	1	---	0
1949	5	4	1	---	0
1951	4	2	2	---	0
1953	4	1	3	---	0
1955	0	0	0	---	0
1957	3	2	1	---	0
1959	13	8	5	---	0
1961	17 ^c	10 ^c	7	---	0
1963	5	1	4	0	0
1964	6	5	1	0	0
1965	5	4	1	0	0
1966	2	1	1	0	0
1967	6	4	2	0	0
1968	8	5	3	0	1
1969	8	4	4	0	0
1970	4	1	3	0	0
1971	10	5	5	0	2
1972	6	3	3	0	2
1973	1	1	0	0	0
1974	5	5	0	0	1
1975	4	3	1	0	0

TABLE N (continued)

Session	Total Bills Vetoed ^a	House Bills Vetoed	Senate Bills Vetoed	Veto Override ^b	Line Items Vetoed in General Appropriations Bill
1976	12	7	5	0	0
1977	28	17	11	16	0
1978	18	12	6	1	0
1979	18	11	7	2	0
1980	31 ^c	16 ^c	15	6	1
1981	20	8	12	2	0
1982	11	4	7	0	0
1983	16	12	4	2	0
1984	15	9	6	2 ^e	1
1985	9	6	3	0	0
1986	13	6	7	3	0
1987	11 ^c	3	8 ^c	0	0
1988	14	5	9	3	15
1989	2	0	2	0	0
1990	2	0	2	0	0
1991	8	4	4	0	0
1992	8	4	4	1	5
1993	9	6	3	0	0
1994	3	0	3	0	0
1995	12 ^c	7	5	1	0
1996	11	4	7	2	2
1997	13	9	4	1	0
1998	7	3	4	0	0
1999	7	1	6	1 ^f	0
2000	4	4	0	0	0 ^g
2001	12	7	5	1	0
2002	5	3	2	0	0
2003	3	1	2	1 ^h	2 ^g
2004	5 ^c	2	3 ^c	0	0
2005	7	5	2	1	2 ^g
2006	4	4	0	2	0 ^g
2007	6	3	3	1	0
2008	6	5	1	1	2
2009	2	2	0	1	0
2010	7	4	3	3	0
2011	4	2	2 ^c	2	0
2012	4	3	1	1	0 ^g
2013	1	0	1	0	1 ^g

a - Doesn't include line item vetoes of general appropriations bill

b - Data on veto overrides incomplete prior to 1963

c - Includes one bill returned for style and form changes but not approved by the Legislature

d - General appropriations bill not passed during regular session but was passed in a special legislative session held prior to the beginning of the fiscal year

e - Includes override of line item veto

f - Override of style and form veto

g - Doesn't include a line item veto of special appropriations bill

h - Override of line item veto of special appropriations bill

TABLE O**DISPOSITION OF JOINT RESOLUTIONS FOR YEARS 1909 THROUGH 2013**

Session	House Joint Resolutions (Introduced) (Adopted)		Senate Joint Resolutions (Introduced) (Adopted)	
1909	38	24	14	3
1911	16	3	25	10
1913	23	10	41	21
1915	20	8	9	4
1917	17	9	17	8
1919	5	0	6	3
1921	7	2	11	5
1923	9	2	9	2
1925	5	0	9	2
1927	3	0	7	0
1929	6	3	7	3
1931	11	2	6	0
1933	11	1	5	2
1935	11	3	8	3
1937	9	2	13	3
1939	15	4	11	1
1941	10	3	9	2
1943	7	1	2	1
1945	10	3	2	1
1947	8	4	4	1
1949	6	4	6	2
1951	2	1	4	3
1953	3	3	5	2
1955	5	1	8	1
1957	6	2	9	3
1959	8	3	13	3
1961	6	1	9	3
1963	8	1	6	3
1964	9	2	7	0
1965	8	1	7	1
1966	8	1	7	1
1967	11	0	9	2
1968	24	2	9	2
1969	7	3	6	0
1970	14	4	12	4
1971	5	1	7	1
1972	18	4	8	1
1973	2	0	3	1
1974	7	2	1	0
1975	5	1	6	3
1976	13	3	3	0
1977	20	14	5	0
1978	8	5	9	3
1979	6	1	5	3
1980	8	4	0	0
1981	4	0	5	0
1982	4	2	3	2
1983	0	0	0	0
1984	5	4	4	0
1985	6	4	3	1
1986	4	2	7	2
1987	2	1	1	0
1988	5	4	1	0

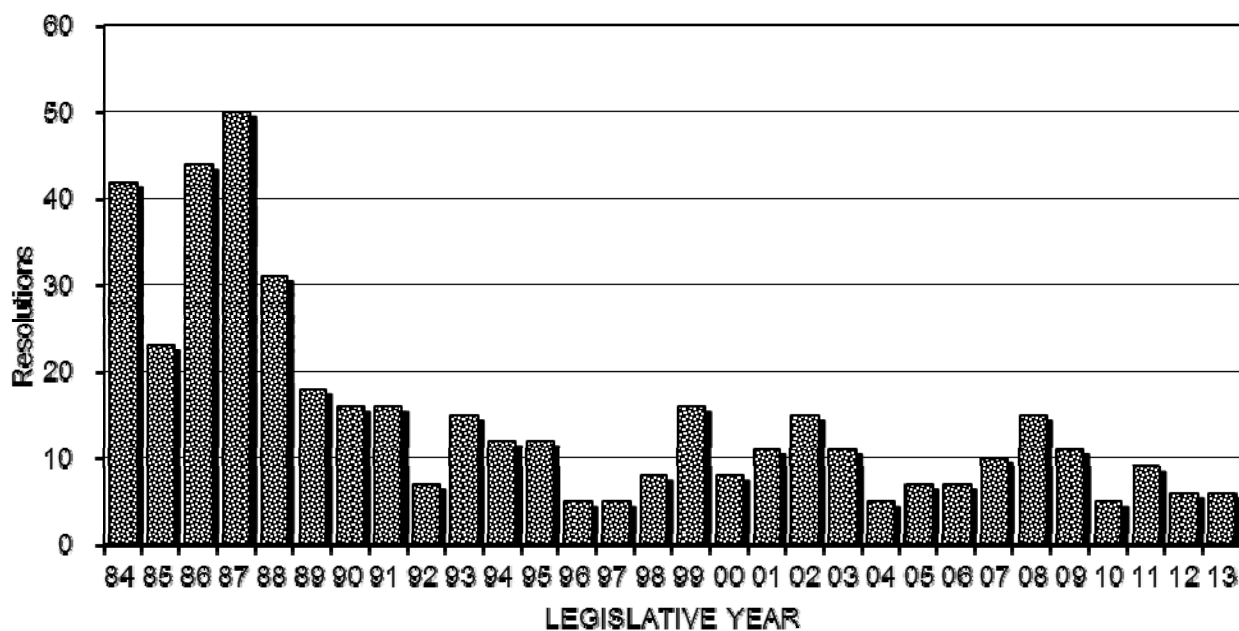
TABLE O (continued)

Session	House Joint Resolutions		Senate Joint Resolutions	
	(Introduced)	(Adopted)	(Introduced)	(Adopted)
1989	4	1	3	2
1990	4	3	3	1
1991	2	0	2	0
1992	3	0	5	0
1993	1	1	4	3
1994	3	1	2	0
1995	3	2	2	0
1996	7	1	2	1
1997	9	3	4	0
1998	8	2	4	1
1999	8	2	6	0
2000	5	0	5	1
2001	5	0	4	1
2002	10	3	5	0
2003	5	1	1	0
2004	3	1	5	0
2005	3	1	0	0
2006	5	1	2	0
2007	0	0	15	0
2008	5	3	2	1
2009	2	0	3	0
2010	6	1	7	1
2011	4	0	1	0
2012	10	4	0	0
2013	3	0	4	0

GRAPH 35

SENATE CONCURRENT RESOLUTIONS

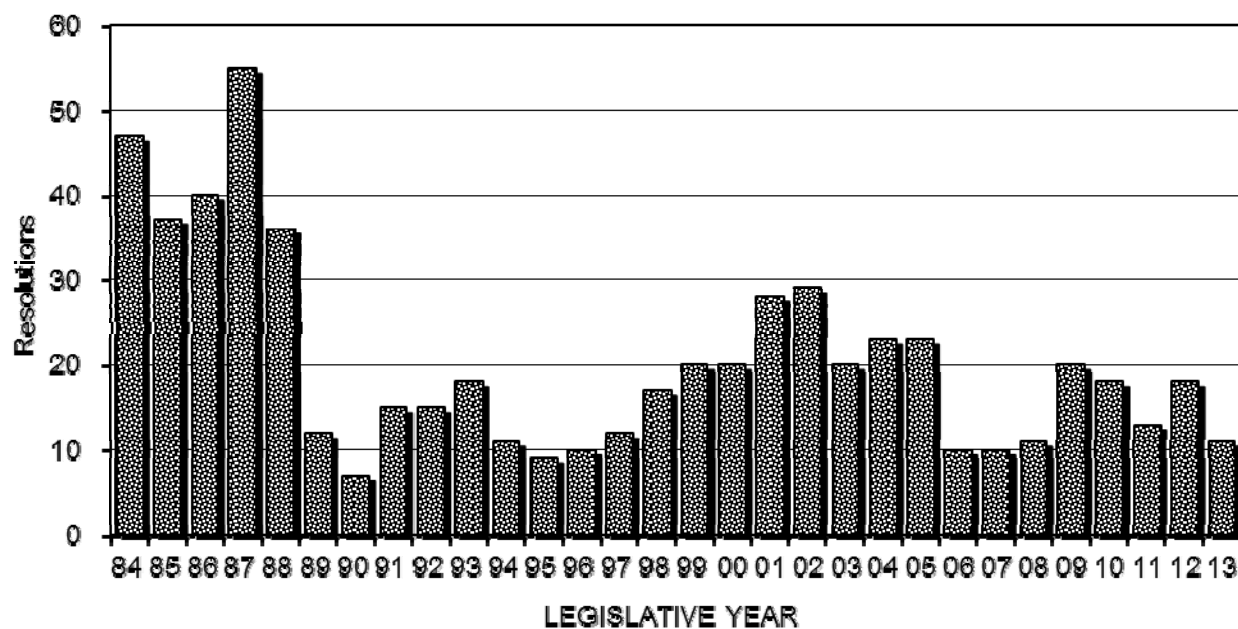
Introduced 1984-2013



GRAPH 36

HOUSE CONCURRENT RESOLUTIONS

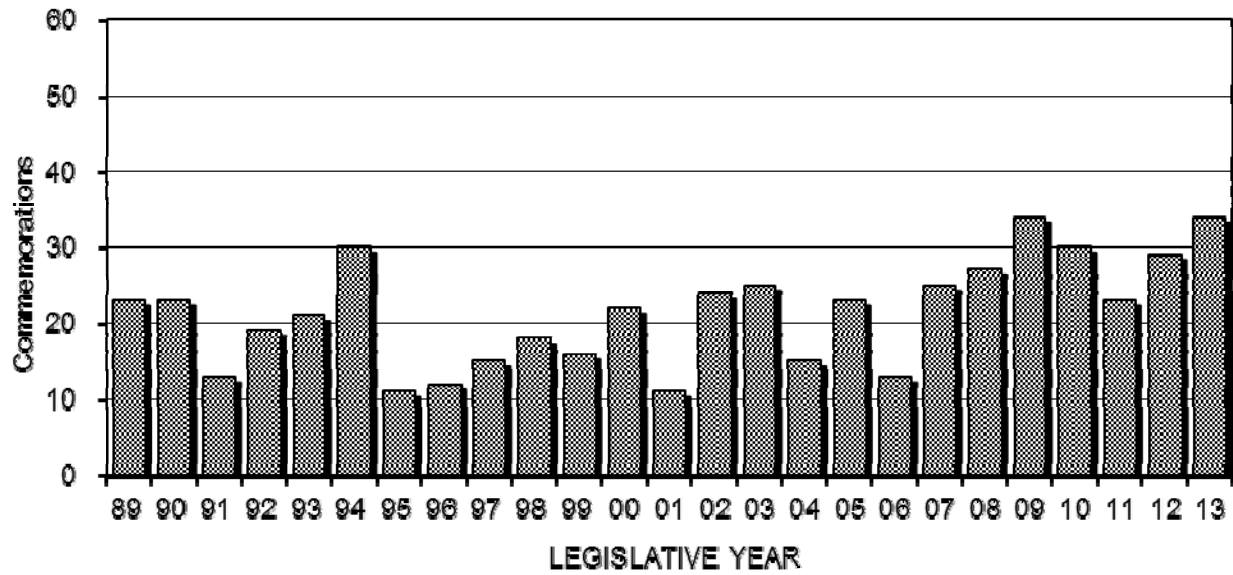
Introduced 1984-2013



GRAPH 37

SENATE COMMEMORATIONS

Adopted 1989-2013



GRAPH 38

HOUSE COMMEMORATIONS

Adopted 1989-2013

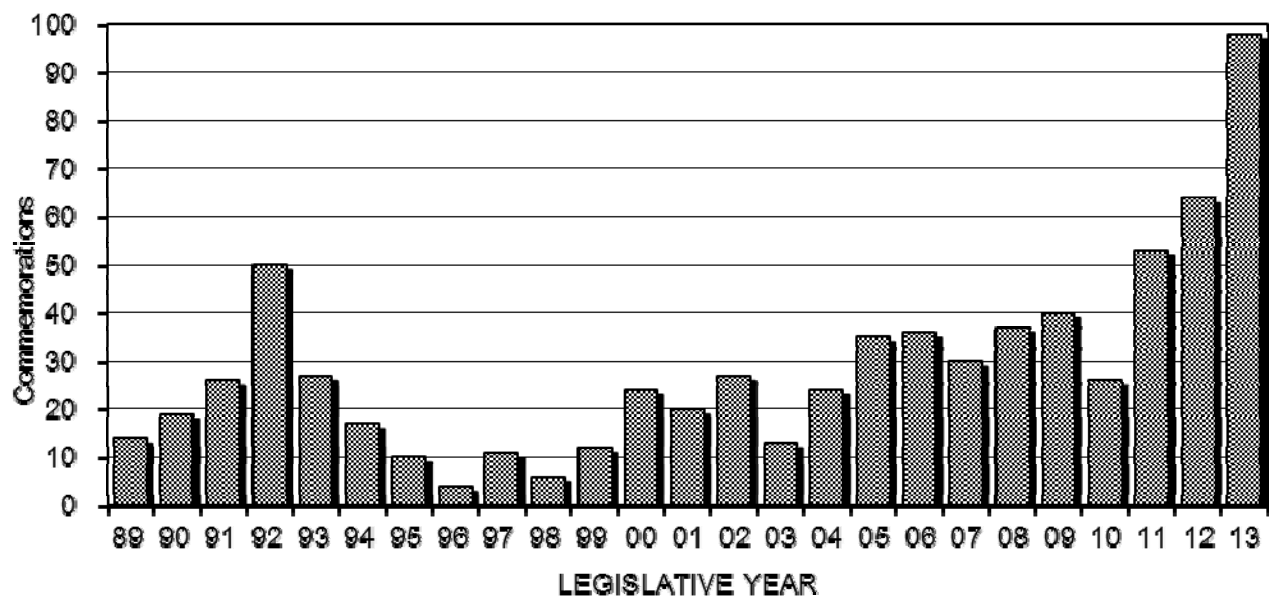


TABLE P

DISPOSITION OF CONCURRENT RESOLUTIONS FOR YEARS 1921 THROUGH 2013

Session	House Concurrent Resolutions (Introduced) (Adopted)		Senate Concurrent Resolutions (Introduced) (Adopted)	
1921	16	N/A	12	N/A
1923	29	10	29	10
1925	11	9	16	14
1927	4	4	23	14
1929	12	9	12	9
1931	23	9	20	15
1933	13	5	5	5
1935	16	8	12	5
1937	14	13	13	10
1939	15	12	12	9
1941	14	9	13	8
1943	9	6	12	6
1945	8	4	5	2
1947	7	6	7	6
1949	7	6	13	12
1951	13	11	15	8
1953	10	5	20	10
1955	13	1	6	2
1957	8	4	11	7
1959	9	2	15	2
1961	21	15	16	11
1963	18	12	14	9
1964	6	3	9	5
1965	26	15	13	8
1966	9	6	7	4
1967	12	10	17	13
1968	8	6	14	10
1969	24	18	11	8
1970	25	12	15	6
1971	30	23	17	11
1972	29	23	9	9
1973	33	28	9	6
1974	24	24	17	11
1975	20	17	20	15
1976	21	15	26	24
1977	21	18	18	15
1978	20	19	24	18
1979	19	17	27	22
1980	34	31	18	16
1981	33	28	31	28
1982	43	39	20	16
1983	58	56	34	27
1984	47	45	42	41
1985	37	33	23	21
1986	40	40	44	43
1987	55	52	50	46
1988	36	35	31	29
1989	12	9	18	15
1990	7	6	16	13
1991	15	12	16	12
1992	15	12	7	6
1993	18	15	15	8
1994	11	9	12	8

TABLE P (continued)

Session	House Concurrent Resolutions		Senate Concurrent Resolutions	
	(Introduced)	(Adopted)	(Introduced)	(Adopted)
1995	9	7	12	12
1996	10	7	5	1
1997	12	8	5	4
1998	17	13	8	5
1999	20	13	16	13
2000	20	15	8	6
2001	28	13	11	9
2002	29	20	15	15
2003	20	16	11	9
2004	23	17	5	3
2005	23	18	7	7
2006	10	10	7	5
2007	10	8	10	7
2008	11	11	15	11
2009	20	16	11	9
2010	18	14	5	5
2011	13	10	9	5
2012	18	12	6	6
2013	11	11	6	4

TABLE Q**DISPOSITION OF COMMEMORATIONS FOR YEARS 1989 THROUGH 2013**

Session	House Commemorations		Senate Commemorations	
	(Introduced)	(Adopted)	(Introduced)	(Adopted)
1989	16	14	23	23
1990	19	19	23	23
1991	26	26	13	13
1992	50	50	19	19
1993	27	27	21	21
1994	17	17	30	30
1995	10	10	11	11
1996	4	4	12	12
1997	11	11	15	15
1998	6	6	18	18
1999	12	12	16	16
2000	24	24	22	22
2001	20	20	11	11
2002	27	27	24	24
2003	13	13	25	25
2004	24	24	15	15
2005	35	35	23	23
2006	36	36	13	13
2007	31	30	25	25
2008	37	37	27	27
2009	40	40	34	34
2010	26	26	30	30

TABLE Q (continued)

Session	House Commemorations		Senate Commemorations	
	(Introduced)	(Adopted)	(Introduced)	(Adopted)
2011	53	53	23	23
2012	64	64	29	29
2013	98	98	34	34

SPECIAL SESSIONS

On October 15-17, 1889, the South Dakota Legislature met for the first time in Special Session to organize and elect officers. No bills or resolutions were addressed at that Special Session. Since then the Legislature has met in Special Session 24 times. The most recent Special Session was October 24, 2011. A summary of the number of bills, resolutions, and commemorations addressed by these Special Sessions follows.

TABLE R
DISPOSITION OF TOTAL BILLS FOR ALL SPECIAL SESSIONS

Session	Introduced	Delivered	Enacted	Percent Enacted
February 8-11, 1916	6	3	3	50.0%
March 18-23, 1918	68	58	58	85.3%
December 2-4, 1919	0	0	0	-----
June 21-29, 1920	132	88	88*	66.7%
June 22-July 1, 1927	40	21	21	52.5%
July 31-August 5, 1933	59	20	20	33.9%
December 21-24, 1936	14	3	3	21.4%
July 10-12, 1944	7	5	5	71.4%
February 6-16, 1950	40	21	21	52.5%
May 18, 1981	5	1	1	20.0%
September 23-24, 1981	8	4	4	50.0%
May 2-3, 1984	2	1	1	50.0%
July 16, 1987	3	3	3	100.0%
October 3, 1991	6	2	2	33.3%
November 26, 1991	2	2	2	100.0%
May 25, 1993	5	4	4	80.0%
July 11-12, 1994	12	4	4	33.3%
September 9, 1994	25	18	16**	64.0%
April 14, 1997	2	1	1	50.0%
December 28-29, 2000	4	3	3	75.0%
October 23-24, 2001	2	2	2	100.0%
June 26-27, 2003	5	3	3	60.0%
October 14, 2005	1	1	1	100.0%
October 24, 2011	<u>2</u>	<u>2</u>	<u>2</u>	<u>100.0%</u>
TOTAL BILLS	450	270	268	59.6%

* line item veto

** 2 vetoes and 2 line item vetoes

TABLE S
DISPOSITION OF SENATE BILLS FOR ALL SPECIAL SESSIONS

Session	Introduced	Delivered	Enacted	Percent Enacted
February 8-11, 1916	2	2	2	100.0%
March 18-23, 1918	37	35	35	94.6%
December 2-4, 1919	0	0	0	-----
June 21-29, 1920	71	45	45*	63.4%
June 22-July 1, 1927	24	15	15	62.5%
July 31-August 5, 1933	22	9	9	40.9%
December 21-24, 1936	5	2	2	40.0%
July 10-12, 1944	4	3	3	75.0%
February 6-16, 1950	12	10	10	83.3%
May 18, 1981	2	1	1	50.0%
September 23-24, 1981	4	1	1	25.0%
May 2-3, 1984	1	1	1	100.0%
July 16, 1987	2	2	2	100.0%
October 3, 1991	3	2	2	66.7%
November 26, 1991	2	2	2	100.0%
May 25, 1993	3	3	3	100.0%
July 11-12, 1994	3	1	1	33.3%
September 9, 1994	22	18	16**	72.7%
April 14, 1997	1	0	0	0.0%
December 28-29, 2000	3	3	3	100.0%
October 23-24, 2001	1	1	1	100.0%
June 26-27, 2003	3	2	2	66.7%
October 14, 2005	0	0	0	-----
October 24, 2011	0	0	0	-----
	227	158	156	68.7%

TABLE T
DISPOSITION OF HOUSE BILLS FOR ALL SPECIAL SESSIONS

Session	Introduced	Delivered	Enacted	Percent Enacted
February 8-11, 1916	4	1	1	25.0%
March 18-23, 1918	31	23	23	74.2%
December 2-4, 1919	0	0	0	-----
June 21-29, 1920	61	43	43	70.5%
June 22-July 1, 1927	16	6	6	37.5%
July 31-August 5, 1933	37	11	11	29.7%
December 21-24, 1936	9	1	1	11.1%
July 10-12, 1944	3	2	2	66.7%
February 6-16, 1950	28	11	11	39.3%
May 18, 1981	3	0	0	0.0%
September 23-24, 1981	4	3	3	75.0%
May 2-3, 1984	1	0	0	0.0%
July 16, 1987	1	1	1	100.0%
October 3, 1991	3	0	0	0.0%
November 26, 1991	0	0	0	-----
May 25, 1993	2	1	1	50.0%
July 11-12, 1994	9	3	3	33.3%
September 9, 1994	3	0	0	0.0%
April 14, 1997	1	1	1	100.0%
December 28-29, 2000	1	0	0	0.0%
October 23-24, 2001	1	1	1	100.0%
June 26-27, 2003	2	1	1	50.0%
October 14, 2005	1	1	1	100.0%
October 24, 2011	<u>2</u>	<u>2</u>	<u>2</u>	<u>100.0%</u>
	223	112	112	50.2%
TOTAL BILLS	450	270	268	59.6%

* line item veto

** 2 vetoes and 2 line item vetoes

TABLE U

DISPOSITION OF RESOLUTIONS AND COMMEMORATIONS FOR ALL SPECIAL SESSIONS

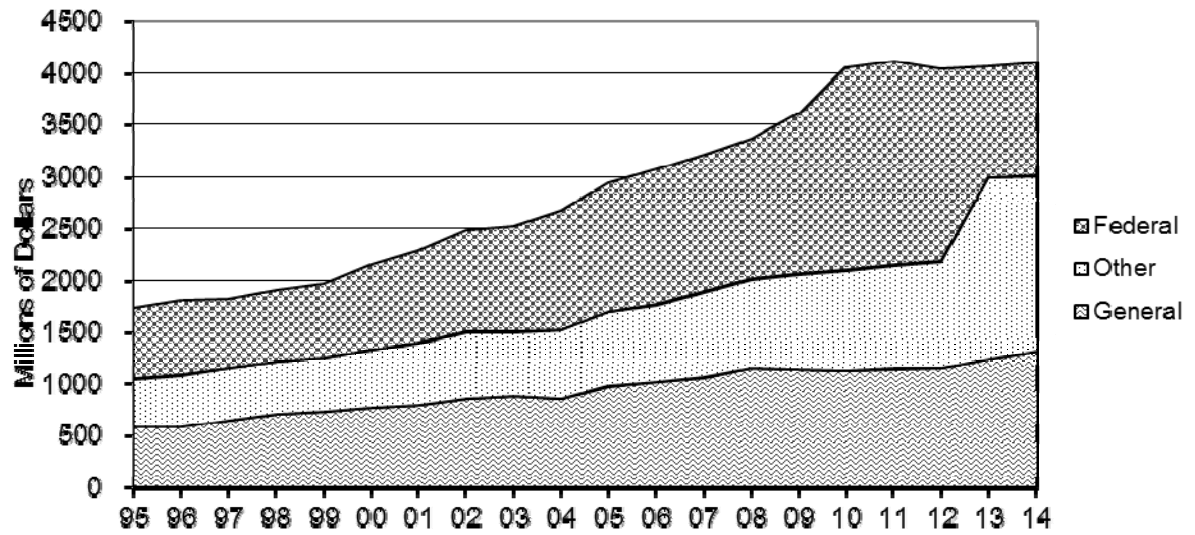
Session	House Joint Resolutions		Senate Joint Resolutions	
	(Introduced)	(Adopted)	(Introduced)	(Adopted)
February 8-11, 1916	1	0	2	0
March 18-23, 1918	2	2	7	6
December 2-4, 1919	1	1	0	0
June 21-29, 1920	2	1	3	2
June 22-July 1, 1927	0	0	1	1
July 31-August 5, 1933	2	0	0	0
December 21-24, 1936	1	0	0	0
July 10-12, 1944	0	0	0	0
February 6-16, 1950	0	0	1	1
May 18, 198	0	0	0	0
September 23-24, 1981	0	0	0	0
May 2-3, 1984	0	0	0	0
July 16, 1987	0	0	0	0
October 3, 1991	0	0	0	0
November 26, 1991	0	0	0	0
May 25, 1993	0	0	0	0
July 11-12, 1994	1	0	5	1
September 9, 1994	0	0	0	0
April 14, 1997	0	0	0	0
December 28-29, 2000	1	0	1	1
October 23-24, 2001	0	0	0	0
June 26-27, 2003	0	0	0	0
October 14, 2005	0	0	0	0
October 24, 2011	0	0	0	0

Session	House Concurrent Resolutions		Senate Concurrent Resolutions	
	(Introduced)	(Adopted)	(Introduced)	(Adopted)
February 8-11, 1916	0	0	0	0
March 18-23, 1918	1	1	0	0
December 2-4, 1919	0	0	0	0
June 21-29, 1920	0	0	0	0
June 22-July 1, 1927	3	2	5	4
July 31-August 5, 1933	2	1	7	4
December 21-24, 1936	1	1	1	1
July 10-12, 1944	1	1	0	0
February 6-16, 1950	0	0	2	2
May 18, 198	0	0	1	0
September 23-24, 1981	0	0	0	0
May 2-3, 1984	0	0	0	0
July 16, 1987	0	0	1	0
October 3, 1991	0	0	0	0
November 26, 1991	0	0	0	0
May 25, 1993	1	1	1	1
July 11-12, 1994	1	0	2	0
September 9, 1994	0	0	0	0
April 14, 1997	0	0	2	2
December 28-29, 2000	0	0	0	0
October 23-24, 2001	0	0	0	0
June 26-27, 2003	0	0	0	0
October 14, 2005	0	0	0	0
October 24, 2011	0	0	0	0

Session	House Commemorations		Senate Commemorations	
	(Introduced)	(Adopted)	(Introduced)	(Adopted)
May 25, 1993	1	1	8	8

GRAPH 39

GENERAL APPROPRIATIONS ACT
Funds Appropriated (FY1995-FY2014)



GRAPH 40

GENERAL APPROPRIATIONS ACT
Funds Appropriated (FY2005-FY2014)

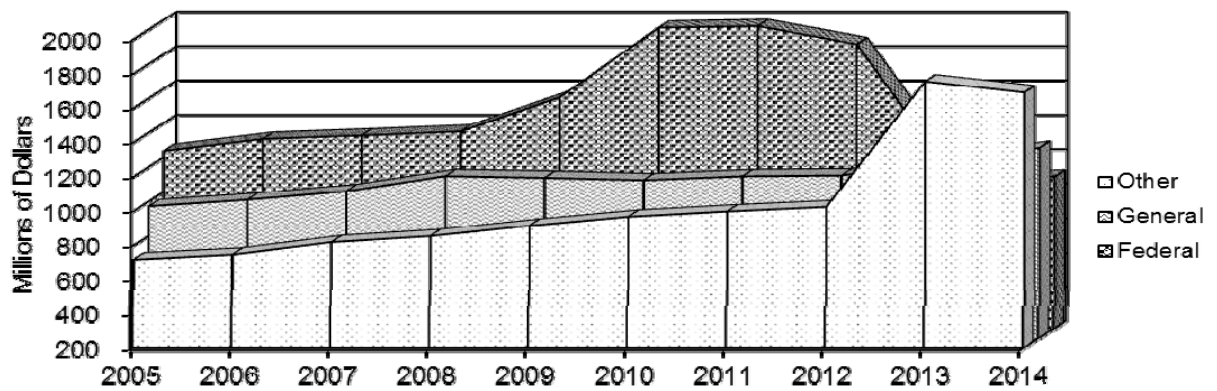


TABLE V
GENERAL APPROPRIATIONS ACT
GENERAL FUNDS APPROPRIATED (FY 1891-FY 1967)

Fiscal Year	General Fund Appropriations
-1891	\$ 438,708
1892-1893	745,059
1894-1895	834,469
1896-1897	744,262
1898-1899	763,882
1900-1901	879,650
1902-1903	1,017,170
1904-1905	1,265,450
1906-1907	1,050,575
1908-1909	1,639,344
1910-1911	1,906,314
1912-1913	2,199,597
1914-1915	2,753,410
1918-1919	3,400,300
1920-1921	5,100,976
1922-1923	6,394,929
1924-1925	7,110,522
1926-1927	7,953,925
1928-1929	6,776,270
1930-1931	7,290,854
1932-1933	6,851,843
1934-1935	5,044,013
1936-1937	5,102,501
1938-1939	5,596,817
1940-1941	5,670,070
1942-1943	6,039,180
1944-1945	7,020,940
1946-1947	7,901,170
1948-1949	10,335,475
1950-1951	14,440,615
1952-1953	17,972,740
1954-1955	21,479,406
1956-1957	24,924,600
1958-1959	33,163,627
1960-1961	33,594,102
1962-1963	40,889,600
1964-1965	49,588,678
1966-1967	108,858,642

TABLE W

**GENERAL APPROPRIATIONS ACT
FUNDS APPROPRIATED (FY 1968-FY 2014)**

Fiscal Year	General Funds	Other Funds	Federal Funds	Total
1968	\$ 52,318,612	\$ 42,818,964	\$	\$ 95,137,576
1969	56,553,197	42,670,524		99,223,721
1970	75,377,063	49,483,418		124,860,481
1971	85,410,636	54,137,622		139,548,258
1972	100,987,933	46,774,067		147,762,000
1973	94,217,112	63,790,619		158,007,731
1974	105,404,780	71,055,716		176,460,496
1975	130,101,700	93,082,400		223,184,100
1976	148,747,700	125,828,300		274,576,000
1977	163,685,800	154,329,400		318,015,200
1978	153,862,799	111,177,955	191,925,281	456,966,035
1979	176,299,795	145,566,581	240,039,748	561,906,124
1980	147,504,470	170,063,909	253,637,640	571,206,019
1981	161,579,669	197,037,538	273,438,254	632,055,461
1982	172,055,756	208,445,374	324,559,669	705,060,799
1983	174,377,043	221,118,937	295,722,215	691,218,195
1984	178,149,248	222,855,037	308,617,414	709,621,699
1985	203,429,282	212,456,096	338,965,476	754,850,854
1986	218,843,480	223,998,297	377,829,496	820,671,273
1987	232,845,386	228,240,097	381,152,332	842,237,815
1988	235,122,964	238,721,107	396,346,231	870,190,302
1989	341,853,799	259,720,365	441,632,933	1,043,207,097
1990	400,539,825	300,891,200	456,939,983	1,158,371,008
1991	436,265,445	308,111,741	495,258,267	1,239,635,453
1992	497,950,803	340,385,723	549,288,025	1,387,624,551
1993	541,403,005	368,246,018	592,713,816	1,502,362,839
1994	574,337,802	399,060,914	655,065,237	1,628,463,953
1995	580,668,969	464,718,521	683,964,694	1,729,352,184
1996	596,260,942	483,608,506	713,544,777	1,793,414,225
1997	639,791,721	507,367,301	667,483,365	1,814,642,387
1998	703,876,993	502,892,326	688,495,268	1,895,264,587
1999	731,018,441	515,827,961	707,629,986	1,954,476,388
2000 ^b	764,532,081	556,321,464	819,370,030	2,140,223,575
2001 ^c	795,761,825	594,092,873	885,378,868	2,275,233,566
2002 ^d	850,885,481	644,360,962	982,560,790	2,477,807,233
2003	875,000,575	622,670,776	1,011,530,371	2,509,201,722
2004 ^e	851,277,150	667,333,054	1,146,903,515	2,665,513,719
2005 ^f	971,660,743	719,318,733	1,237,233,507	2,928,212,983
2006 ^g	1,009,980,027	748,493,050	1,307,008,887	3,065,481,964
2007 ^h	1,059,223,960	820,045,557	1,327,151,561	3,206,421,078
2008 ⁱ	1,146,522,479	855,452,511	1,349,933,464	3,351,908,454
2009 ^j	1,136,187,623	915,205,715	1,548,760,210	3,600,153,548
2010 ^k	1,127,819,469	938,670,146	1,853,072,976	3,919,562,591
2011 ^l	1,145,662,738	998,519,418	1,963,509,180	4,107,691,336
2012 ^m	1,150,867,146	1,024,674,756	1,857,203,151	4,032,745,053
2013 ⁿ	1,232,361,618	1,754,950,330	1,068,340,191	4,055,652,139
2014	1,312,583,507	1,691,241,801	1,086,806,915	4,090,632,223

^aIncludes federal funds in FY 1968 through FY 1977

^bFY 2000 General Appropriations Act was amended by the 2000 Legislature to increase General Funds from \$750,858,528 to \$764,532,081, an increase of \$13,673,553.

^cFY 2001 General Appropriations Act was amended by the 2001 Legislature to increase General Funds by \$1,351,120 from \$794,410,705 to \$795,761,825 and to increase Other Funds by \$2,600,000 from \$591,492,873 to \$594,092,873

^dFY 2002 General Appropriations Act was amended by the 2002 Legislature to increase General Funds by \$1,487,000 from \$849,398,481 to \$850,885,481, to increase Other Funds by \$1,122,447 from \$643,238,515 to \$644,360,962, and to increase Federal Funds by \$587,000 from \$981,973,790 to \$982,560,790.

^eFY 2004 General Appropriations Act was amended by the 2003 Legislature during its Special Session to increase appropriations by \$5,516,355 from all funds. This included \$500,000 from General Funds, \$500,000 from Other Funds, and \$4,515,355 from Federal Funds. The 2004 Legislature further amended the FY2004 General Appropriations Act by reducing appropriations by a net \$28,385,663 from all funds. This included a reduction of \$52,484,358 from General Funds and an increase of \$24,098,695 from Federal Funds.

^fFY 2005 General Appropriations Act was amended by the 2005 Legislature by increasing appropriations by a net \$17,421,607 from all funds. This included \$633,125 from the General Funds, \$3,258,732 from Federal Funds, and \$13,529,750 from Other Funds. A total of \$3,105,043 from all funds was reappropriated from FY 2004 to FY 2005.

^gFY 2006 General Appropriations Act was amended by the 2006 Legislature by increasing appropriations by \$9,562,768 from all funds. This included \$1,208,296 from General Funds, \$4,708,072 from Federal Funds, and \$3,646,400 from Other Funds.

^hFY 2007 General Appropriations Act was amended by the 2007 Legislature by increasing appropriations by \$19,551,896 from all funds. This included \$1,114,638 from General Funds, \$2,017,458 from Federal Funds, and \$16,419,800 from Other Funds.

ⁱFY 2008 General Appropriations Act was amended by the 2008 Legislature by increasing appropriations by \$11,824,064 from all funds. This included an increase of \$8,807,605 from General Funds, \$3,820,000 from Federal Funds, and a decrease of \$803,541 in Other Funds.

^jFY 2009 General Appropriations Act was amended by the 2009 Legislature by increasing appropriations by \$51,445,062 from all funds. This included an increase of \$117,910,306 from federal stimulus funding, an increase of \$125,000 from non-stimulus federal funding; an increase of \$5,007,393 from Other Funds; and a decrease of \$71,597,637 from General Funds.

^kFY2010 General Appropriations Act was amended in 2010 with an increase of \$124,278,690 from all funds. This included a decrease of \$5,515,119 from General Funds, an increase of \$100,921,999 from Federal Funds, and an increase of \$28,871,810 from Other Funds.

^lFY 2011 General Appropriations Act was amended in 2011 with an increase of \$43,617,148 from all funds. This included a decrease of \$5,743,913 from General Funds, an increase of \$32,774,232 from Federal Funds, and an increase of \$26,586,829 from Other Funds.

^mFY 2012 General Appropriations Act was amended in 2012 by two separate pieces of legislation, SB 48 and HB 1137 appropriated an additional \$30,779,066 in General Funds, \$7,568,280 in Federal Funds, and \$25,016,351 in Other Funds. Additionally, the Legislature approved a transfer of \$1,000,000 from the General Fund to the Cement Plant Retirement Fund and transfer of \$5,000,000 from the General Fund to the Railroad Trust Fund.

ⁿFY 2013 General Appropriations Act was amended in 2013 by two separate pieces of legislation. SB 90 and HB 1060 appropriated an additional \$23,311,489 in General Funds, \$4,610,380 in Federal Funds, and \$21,444,473 in Other Funds. Additionally, the Legislature approved transfers from the General Fund of \$2,000,000 to the South Dakota Cement Plant Retirement Fund, \$500,000 for Research Commerce Grants, \$2,000,000 for Future Fund Grants, and \$1,000,000 to the Tobacco Reduction and Prevention Fund.